

THE
ELECTRONIC
UNIVERSITY
NETWORK

1986 - 1987

linking people to a world of education

ELECTRONIC UNIVERSITY NETWORK



TABLE OF CONTENTS

I	WELCOME TO THE ELECTRONIC UNIVERSITY NETWORK™!
II	WHAT IS THE ELECTRONIC UNIVERSITY NETWORK? <ul style="list-style-type: none">• How the Network Functions• A Bridge Between You and the University• A Special Instructor-Student Relationship• Three Pathways to Education
III	A TOTAL UNIVERSITY EXPERIENCE <ul style="list-style-type: none">• Courses• Degree Programs• Counseling Services• Electronic Library
IV	ADMISSION TO THE ELECTRONIC UNIVERSITY NETWORK
V	HOW ELECTRONIC UNIVERSITY NETWORK COURSES WORK <ul style="list-style-type: none">• How to Register for Courses• How to Take Courses on the Network• Communicating with Your Instructor• Communicating with Other Students on the Network
VI	STANDARD FEES
VII	COMPUTER DISCOUNTS FOR STUDENTS
VIII	ELECTRONIC LIBRARY
IX	ACADEMIC PROGRAMS <ul style="list-style-type: none">• Undergraduate – National Degree Programs• Graduate – Master of Business Administration (MBA) Program• Certificate Programs
X	COURSE OFFERINGS <ul style="list-style-type: none">• Courses for Credit• Special Course Offerings• Non-Credit Courses
XI	TRANSFERRING COURSE CREDITS
XII	INSTITUTIONS PARTICIPATING IN STANDARDIZED NATIONAL EXAMINATION PROGRAMS
XIII	ORDER FORMS

TeleLearning and the Electronic University Network are registered trademarks of TeleLearning Systems, Inc. The Electronic Library is a trademark of TeleLearning Systems, Inc. CLEP-College Level Examination Program and CLEP are registered trademarks of the College Board. ACT PEP is a trademark of American College Testing Proficiency Examination Program. Apple is a registered trademark of Apple Computer, Inc. IBM and DOS are registered trademarks of International Business Machines. Commodore is a registered trademark of Commodore Business Machines. Leading Edge is a trademark of Leading Edge Products, Inc.

linking people to a world of education

“The educational breakthrough that the Electronic University promises will provide education on an unprecedented scale. This affordable, personalized system has the additionally attractive by-product of generating thousands of new jobs in the recruitment of teachers.”

GEORGE BUSH
*Vice President of the
United States*

WELCOME TO THE ELECTRONIC UNIVERSITY NETWORK!

SECTION ONE



You have just become part of a nationwide educational community. Education and learning have always supplied the foundation for individual growth and accomplishment. Now, your personal computer together with the Electronic University Network delivers the most convenient, flexible new opportunity for all members of your family to continue their education – at whatever level they choose.

Beginning today, you can take classes from colleges and universities located all across the country, at your home or office, on your own computer, and at your own pace. Living anywhere, you'll be able to easily communicate with professors and fellow students living everywhere. And, you can even earn college credit, professional certificates and full degrees through this unique system.

As you probably already know, the Electronic University Network has experienced phenomenal growth and success. The reasons are simple. Using the network, people can continue their education where it was not possible before. They can overcome those major educational barriers – time, distance, inconvenience – simply by striking one key on their computer. Most important, every course is highly personalized and motivating. With the help of your own instructor, you will find it easier than ever before to finish courses, complete a degree program, or learn the skills that will move you ahead in your career.

We at the Electronic University are excited and proud that you have decided to join this exciting new dimension in education. With your lifetime enrollment in the Electronic University Network, you and your whole family are about to discover an ever-expanding world of programs, courses, and friends. Welcome and good luck.

RON GORDON
Chairman
Electronic University Network

WHAT IS THE ELECTRONIC UNIVERSITY NETWORK?

SECTION TWO



How the Network Functions

The Electronic University Network is a new way to take real classes, from live instructors, at your own pace, right in your own home or office, whenever you choose. The Electronic University Network is an educational telecommunications system which – for the first time – brings the university to the student.

The network also connects your computer to educational resources including counseling, a variety of student services, and an electronic research library – all via your modem and standard telephone lines.

No prior computer knowledge is required to use the Electronic University Network. Students, families, and businesses can be located anywhere, study virtually anything, at any hour – and be taught by instructors located around the country. A multitude of courses, ranging from personal and professional development topics to undergraduate and graduate-level subjects, and even fully-accredited degree programs are available through this unique educational system.

For working adults, parents, and individuals who have had to discontinue their education because of obstacles such as time, cost, or location, the Electronic University Network provides a revolutionary new opportunity to make educational goals a reality.

A Bridge Between You and the University

It is important to note that the Electronic University Network is not an academic institution, but rather, an educational communications system that links students to instructors and other students throughout the United States. The network issues neither college credits nor degrees. When coursework is successfully completed, credits and transcripts are issued directly from the academic institutions that deliver their courses over the network. All the colleges and universities that offer credit via the Electronic University Network are fully accredited by regional commissions on higher education, and recognized nationally by the Council on Post-Secondary Accreditation.

A Special Instructor-Student Relationship

One of the most important benefits of joining the Electronic University Network is the strong relationship that develops between a student and his or her instructor. Your instructor will be your partner and special guide leading you through new course materials.

When you begin your first course, you will experience all of the assistance and support that comes from a one-to-one relationship with a skilled teacher. If you have a problem with your coursework, your instructor will work with you in a personal way to help you learn and succeed.

Most important, your instructor serves as an accessible learning resource whose broad experience and subject expertise you can call upon, and whose knowledge and concern will make your Electronic University Network experience enjoyable and successful.

Three Pathways to Education

The Electronic University Network delivers undergraduate and graduate courses for college credit as well as programs for personal and professional development. Depending on your specific educational goals, three pathways are available to you:

Take Individual Courses

If your primary interest is to take selected courses without pursuing a degree or certificate, you may do so with the assurance that your earned credit will be available should you wish to pursue a degree in the future. You can enroll for individual courses by calling an Enrollment Counselor at the following toll-free numbers: 800-22LEARN (outside California), and 800-44LEARN (in California). This procedure will allow you to start courses immediately without enrolling at a particular college or university.

Earn a Degree or Certificate

A variety of full degrees and specialized certificate programs is available through the Electronic University Network, including an Associate in Arts, Associate in Science in Management, Bachelor of Arts, Bachelor of Science in Business Administration, and Master of Business Administration (MBA). Six specialized certificates in business and computer-related fields are also available.

For detailed information on these programs, the institutions offering them, and the course requirements, see Sections IX and X of this catalog.

Accumulate Transferable Credit

Many students use the network as a part-time educational resource to supplement coursework they are accumulating toward a degree at a college or university in their local area. For such students, the Electronic University Network is an ideal way to conveniently earn college credits that are directly transferable into the local degree program. Selected courses, then, are taken on the network rather than at the local campus. This coursework is normally preapproved by the student and his/her counselor at the local school. When the course has been successfully completed, it is a standard process to transfer earned credit to the home college or university. This is accomplished by presenting an official transcript from the institutions which award credits over the network.

linking people to a world of education



“ Juggling schedules, working 40 hours, and still trying to get my undergrad prerequisite out of the way made law school seem remote. I finished my last course in record time through my computer, and got the highest grade given on the final. ”

A TOTAL UNIVERSITY EXPERIENCE

SECTION THREE



Courses

The Electronic University Network is an educational system which — for the first time — brings the university to you. It's a telecommunications network which connects any person who has access to a personal computer to instructors and fully-accredited universities all over the country. This unique educational system, which features direct interaction between student and instructor, offers you the opportunity to select from over 150 courses leading to specialized certificates, Associate and Bachelor degrees, and even an MBA — all from fully accredited institutions.

Courses delivered through the Electronic University Network are grouped into two broad categories:

- Courses for Credit
- Non-Credit Courses

See Section X for complete descriptions of all courses offered through the Electronic University Network.

Degree Programs

Five degree programs are available through the Electronic University Network. These programs are available from specially selected, fully-accredited colleges and universities which provide flexible degree paths to meet the needs of today's students. The five degree programs are:

- Associate in Arts
- Associate in Science in Management
- Bachelor of Arts
- Bachelor of Science in Business Administration
- Master of Business Administration (MBA)—General

The key benefit to the degree programs offered through the Electronic University Network is flexibility. Not only do you have the ability to earn credit from a variety of sources, but you can also complete your degree at your own pace and at locations you choose.

As a degree candidate, you are also offered comprehensive counseling support in choosing the most appropriate degree path and the college or university which best suits your educational and career goals.

Counseling

If your goal is to or academic curriculum personalized course electronic quester computer and transfer (keystroke) to department. You personalized help choosing the degree program academic goals. This network course. This service is enrollment in Network.

Counselors will about the college the network, and the institution needs. Our network completely versed computer-based external degree you understand referring credit "life experience credit.

Counseling you select program, your academic career university. These high you plan your service is usually expense.

Counseling Services

If your goal is to enter a degree program or academic curriculum, you can request personalized counseling by filling out an electronic questionnaire on your computer and transmitting it (with one keystroke) to the network counseling department. You will then receive personalized help from a counselor in choosing the courses, certificate, or degree program best suited to your academic goals. There is no charge for the network counseling service at this time. This service is included as part of your enrollment in the Electronic University Network.

Counselors will assist you in learning about the colleges and universities using the network, and guide you in enrolling in the institution which fits your individual needs. Our network counselors are completely versed in all guidelines governing computer-based distance learning and external degree programs. They can help you understand the procedures for transferring credit, credit banking, and having "life experiences" evaluated for academic credit.

Counseling is an on-going process. Once you select a certificate or degree program, you will also have access to academic counselors at the college or university in which you have enrolled. These highly trained individuals will help you plan your course of study. This service is usually available at no additional expense.

Electronic Library

No educational program is complete without research facilities. To complement your coursework, the network offers access to the Electronic Library™. Through this service, you will be able to call up a comprehensive listing of books in print, a complete encyclopedia, political news reports, environmental information, abstracts from prestigious journals such as the Harvard Business Review, indexes and articles on virtually any subject of your choice, and much more.

This bank of information is continually updated to enhance your education. For a listing of current offerings, see the Electronic Library Directory.

As an Electronic University Network student, you will not be charged a subscription fee for your membership in the Electronic Library. You will be billed only for on-line connection time when you access on-line data bases offered through the Electronic Library. Since on-line time can only be billed electronically, you must have a VISA or MasterCard to use the electronic research services. To determine the specific connection-time costs for individual data bases, consult the Electronic Library Directory in section VIII of this catalog.

Technical Assistance

If you have questions of a technical nature, the Student Services group at the Electronic University Network is available from 7 a.m. to 9 p.m. (Pacific Time) to answer your questions and assist you. For computer-related inquiries, advice on equipment set-up, or questions regarding course disks, software or library data bases, call Student Services at one of the following toll-free numbers: 800-642-4888 if calling from outside of California or 800-654-4888 in California.

linking people to a world of education

“I would just indicate that we’re excited about the concept of the Electronic University. I think this could not come at a more propitious time. The thrilling thing about the Electronic University is its flexibility and its adaptability as far as its ability to reach all learners on all levels, and then to teach them where they are, and then to individualize the instruction for each and every student. . . ”

TERREL BELL
*Former United States
Secretary of Education*

ADMISSION TO THE ELECTRONIC UNIVERSITY NETWORK

SECTION FOUR



Enrolling in the Network is a simple, one-time process that gives you, and all other members of your household, lifetime membership, and access to all Electronic University Network services. This means you can register for courses, request counseling, rely on the Student Services group for technical advice, or use the impressive electronic research facilities of over 60 data bases – the Electronic Library.

You can enroll in the Electronic University Network on weekdays, between 7 am and 7 pm, Pacific Time, by calling the toll-free number, 800-22LEARN (California residents should dial 800-44LEARN). An Enrollment Counselor will assist you in enrolling in the network, registering for your first course, or buying a personal computer and a modem at a discount.

Payment of the one-time enrollment fee (see Standard Fees: Section VI) can be made with a credit card, cashier's check, or money order. If you prefer to enroll through the mail, simply fill out the form provided in the final section of this catalog and send it to:

Office of Admissions
Electronic University Network
505 Beach Street
San Francisco, CA 94133

HOW ELECTRONIC UNIVERSITY NETWORK COURSES WORK

SECTION FIVE



The Electronic University Network is a telecommunications system that instantly connects your personal computer with the personal computer of an instructor via your modem and standard telephone lines. Courses taken through the Electronic University Network enable you to work at your own pace, on your own computer, and with the vital benefit of personalized human instruction. Your instructor will provide individual attention, tailoring the course to your own progress and interests.

How to Register for Courses

To register for a course, simply call an Enrollment Counselor at one of the following toll-free numbers: (800-22LEARN, or 800-44LEARN in California). For your convenience, your course registration fees can be charged to your VISA, MasterCard, American Express, or Diners Club credit card (or payment can be made with a cashier's check or money order). Once you have registered for a course, course disks and other materials are sent directly to you through the mail.

How to Take Courses on the Network

Once you have registered for a course, you will receive your course materials in the mail. As soon as you receive your course disks and accompanying materials, you may begin taking your course and sending your lessons to your instructor. Electronic University Network course packages typically consist of the following:

- Course disks containing lessons and assignments
- A textbook
- A study guide
- Additional interactive software or other supplemental learning aids

Your course disks contain a general introduction followed by a series of lessons. A typical lesson includes a reading assignment, instruction, lesson exercises, and course-specific activities. As you complete the lesson exercises, you will send them to your instructor via electronic mail.

Your instructor reviews your work, answers questions (often providing you with personalized assignments and activities), and sends the lesson response to your electronic mailbox for you to retrieve whenever you are ready.

Communicating with Your Instructor

You and your instructor are both assigned electronic mailboxes on the Electronic University Network central computer. With a single keystroke you can send and receive lessons and messages to and from each other's electronic mailbox. All transmissions are completely automated by your Electronic University Network software, and no computer knowledge is required to use the system.

Your electronic mailbox will overcome the barriers of conflicting schedules and time zones, and provide instant access to transmitted messages and lessons.

Throughout your course you'll be establishing a strong relationship with your instructor. You'll receive the guidance and support you need in course topics that are difficult. Your instructor will also offer advice on academic topics and give you feedback and personalized lessons which will help you successfully complete your courses. Overall, your instructor will become a personal mentor and associate, bringing clarity to a new subject and support for difficult or new educational concepts. Your instructor will be an ally who will help you toward your academic goals.

Communicating with Other Students on the Network

In addition to communicating with your instructor, you will soon be able to communicate with other students on the network. For example:

- Electronic University Network Forums allow students to take part in electronic class discussions on course-related topics.
- The Electronic University Network Student Exchange will soon allow students to communicate with one another on academic and non-academic subjects.

**Electronic University
Network Forums**

Electronic University Network Forums allow you to discuss specific course subjects just as you would in a live classroom. Debate a hot topic. Review or critique a case study. Discuss a hypothetical problem. All of these capabilities are possible under the direction of your instructor in an Electronic University Forum. Now you can truly become part of a total university experience – without leaving your home or office.

**The Electronic University Network
Student Exchange**

Coming soon is the Electronic University Network Student Exchange, which will allow you to place notices for other students on electronic bulletin boards, just as you would on a real campus. You can read or scan notices from other students that are in categories which might interest you, and reply to any notices you wish.

An Electronic Student Store will allow you to purchase Electronic University Network sweatshirts, mugs, and other items. Many new student services are scheduled to be launched via the Electronic Student Exchange in the upcoming months including an interactive Electronic School Newspaper and recommended Educational Software Programs for children and family members not taking telecommunicated courses. The Electronic University Network Student Exchange is a new way for you to meet and interact with your fellow students, whether they're down the street or across the country.

linking people to a world of education



“ I thought about correspondence courses for the summer, but it's hard to keep motivated when I have to wait weeks just to find out how I did on a homework assignment. Using the Electronic University Network, I get personalized reponses from my instructor within 48 hours. ”

STANDARD FEES

S E C T I O N S I X



ENROLLMENT

A one-time fee of \$195.00 provides lifetime membership in the Electronic University Network for you and your family. The enrollment package allows you to communicate on the network, register for courses, and access services such as Counseling and the Electronic Library.

COURSES

Course fees are listed with the course descriptions in Section X of this catalog. In general, course fees include the cost of course disks, instruction, and all telecommunications costs. Undergraduate course costs typically range from \$60 to \$80 per credit. On the average, graduate course costs range from \$100 to \$130 per credit. Exceptions are noted.

FINAL EXAMINATIONS

Credit courses are followed by proctored final examinations which have been developed by the delivering institution or by an independent academic testing body such as the College Board.

Typically, if the delivering institution has developed the final exam, it is free of charge. If the delivering institution chooses to use a standardized national examination as the final exam for the course, there will be an additional charge associated with registration for the exam.

The two types of standardized examinations Electronic University Network students might encounter are the following:

CLEP: College Level Examination Program

ACT/PEP: American College Testing Proficiency Examination Program

If a course is followed by a standardized national examination, it is noted after the course description in Section X of this catalog.

See your Student Handbook for more specific details on final examinations.

TEXTBOOKS AND RELATED MATERIALS

Textbooks, study guides, and other published learning aids are not included in the course fees. You may order these materials when you register for the course or purchase them independently from a local college bookstore.

COMMUNICATION CHARGES

Network communication charges are included in most course prices, so you will not incur a network usage charge to communicate during the course, even if the delivering institution or professor is located across the country. However, for all courses listed in the Special Course Offerings section, there are separate communications charges. Some exceptions may also occur if you are located in a very remote area.

INSTITUTIONAL FEES

When enrolling in certain universities or colleges, you may expect to pay miscellaneous fees for application, graduation, transcripts, or other specialized academic services to the college in which you enroll. Institutional fees depend entirely on the individual policies of the school which delivers the certificate or degree.

Course fees listed in this catalog already include fees for instruction from the delivering institution. Therefore, institutional fees typically cover services such as official record keeping and administrative functions. Because these fees vary from institution to institution, be sure to ask your Enrollment Counselor at the 800 number, or check your Student Handbook for information on degree programs available through the Electronic University Network.

ELECTRONIC LIBRARY

Your Electronic University Network membership entitles you to access over 60 data bases and other services available through the Electronic Library. There are no sign-up fees; you are only charged for on-line connection time. See the Electronic Library Directory, Section VIII, for a listing of the data bases and rates. The Electronic Library is an optional resource.

COUNSELING

Students who request individualized counseling will be assisted with course selection, and will be advised of options for pursuing a certificate or degree program and directed to an appropriate institution. There is no charge for this service at this time; counseling is included as part of your enrollment in the Electronic University Network.

TELELEARNING REFUND POLICY

The Electronic University Network exercises the following policy on refunds:

100% Refund— If the Enrollment Package and/or Course Materials are returned undamaged within 30 days from date of shipment.

50% Refund— If up to two lessons of a course have been transmitted via the Network.

No Refund— After transmission of the second lesson.

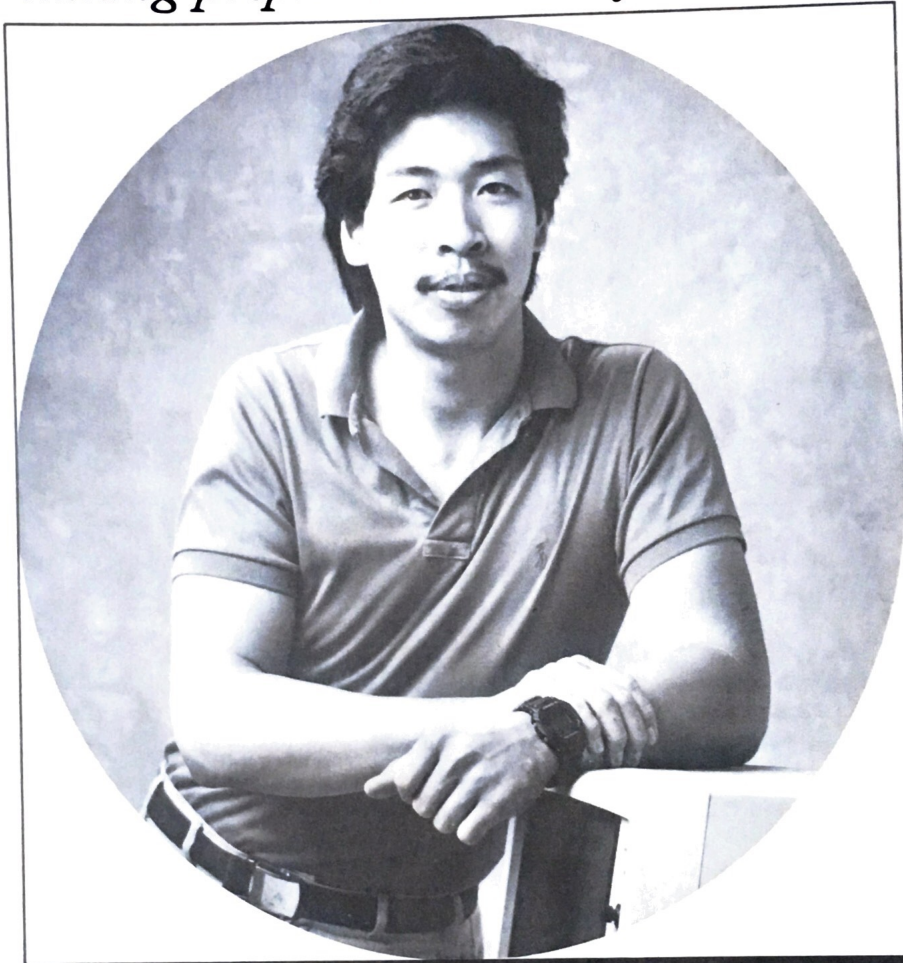
Computer hardware is sold under manufacturer's warranty.

This policy is subject to any and all restrictions imposed by participating Colleges and Universities.

Please Note: Returned merchandise will not be accepted without an approved Returned Merchandise Authorization (RMA) number issued by TeleLearning Systems, Inc.

COMPUTER DISCOUNTS FOR STUDENTS

linking people to a world of education



“ I bought a personal computer with high hopes — and for a year I couldn’t find many uses for it other than games. Now I’m regularly using my PC to take courses I’ve always wanted to take, through the network. ”



The Electronic University Network may be the first meaningful reason for you to purchase a personal computer. Working adults and their families, and students alike have commented that this educational system allows them to feel "friendly" towards personal computing for the first time. Students have told us that their computer literacy and personal productivity have increased significantly since taking courses over the network.

If you do not already own a personal computer, a selection of personal computer systems, consisting of everything you need to take courses, is available at substantially reduced prices with your enrollment in the Electronic University Network.

The Electronic University Network functions on Commodore, Apple, IBM and IBM-compatible computers. A range of price options and selections is available on these systems. Please check below to determine which system is most appropriate for your needs.

The prices of computer systems and model types are subject to change. Therefore, if you are interested in purchasing a computer system with your enrollment, it is recommended that you call the Electronic University Network toll-free numbers for the latest information on available personal computers and current discounts.

Personal Computer Systems Available Through The Electronic University Network

Please note:

Discounts on personal computer systems are available only to individuals who have enrolled in the Electronic University Network.

COMMODORE 64

Package includes:

Commodore 64 Personal Computer/
Keyboard
1 Disk Drive
Modem
Modem Telecommunications Software

APPLE IIc

Package includes:

Apple IIc with 128K memory
1 Disk Drive
Apple Operating System
Monitor
Monitor Stand
Modem
Modem Telecommunications Software
90-day warranty on all service/parts

LEADING EDGE Model D (IBM compatible)

Package includes:

Leading Edge Model D Computer with
256K memory
2 Disk Drives
12" Monochrome Monitor
Parallel and Serial Ports
4 Expansion Slots
MS DOS
Modem
Modem Telecommunications Software
1-year warranty on all service/parts
Toll-free Leading Edge Customer
Support Hotline

IBM PC

Package includes:

IBM PC Computer with 256K memory
2 Disk Drives
14" Zenith Monitor
Graphics Card
IBM Asynchronous Communications
Card
Dos 2.1
Modem
Modem Telecommunications Software
90-day warranty on all service/parts

THE ELECTRONIC LIBRARY

SECTION EIGHT



Enrollment in the Electronic University Network entitles you and your entire family to access the Electronic Library, a unique electronic resource. When you receive confirmation of your enrollment in the Electronic University Network, your automatic membership in the Electronic Library will also be complete.

Through a single keystroke, you can access a virtually limitless range of books, reference materials, a full encyclopedia, articles and indexes on any subject of your liking, and an interesting and valuable array of services including the Official Airline Guide, financial and stock reports, and much more.

The following data bases and services may be accessed at any time of the day or night on a cents-per-minute basis. Connection-time charges will be billed electronically to your credit card. Specific rates are listed after the description of each data base.

DATABASE	LABEL	PRODUCER	DESCRIPTION	PRICE PER MINUTE*
BUSINESS/FINANCIAL				
ABI/INFORM	INFO	Data Courier, Inc.	Business	.35
Abstracts of Working Papers in Economics	AWPE	Cambridge University Press	Economics	.35
Business Software Database	BSOF	Data Courier, Inc.	Software product descriptions	.35
Corporate and Industry Research Reports Online Index	CIRR	JA micropublishing, inc.	Corporate research reports	.42
Harvard Business Review/Database	HBRO	John Wiley and Sons, Inc.	Business and management	.35
Management Contents	MGMT	Information Access Company	Business	.33
PATDATA	PATS	BRS Information Technologies	All patents registered through U.S. Patent Office since 1975	.23
Trade and Industry Index	BIZZ	Information Access Company	Technological developments in major U.S. industries	.47

*Prices listed above are subject to change.

DATABASE	LABEL	PRODUCER	DESCRIPTION	PRICE PER MINUTE*
REFERENCE				
Abstrax 400	A400	Information Sources Limited	400 Periodicals	.33
Academic American Encyclopedia Database	AAED	Grolier Electronic Publishing Inc.	Multi-disciplinary encyclopedia	.28
ACS Directory of Graduate Research	DGRF	American Chemical Society	University chemistry-related departments and faculty	.47
Associations' Publications In Print	APIP	R.R. Bowker	Association literature	.37
Books In Print	BBIP	R.R. Bowker	U.S. books in print	.33
Dissertation Abstracts Online	DISS	University Microfilms International	All academic subjects	.37
Knowledge Industry Publications Database	KIPD	Knowledge Industry Publications, Inc.	Directory of computerized databases	.35
Magazine Index	MAGS	Information Access Company	Over 400 general interest magazines	.37
National College Databank	PETE	Peterson's Guides, Inc.	College and university profiles	.37
National Newspaper Index	NOOZ	Information Access Company	Five national newspapers indexed	.37
Online Microcomputer Software Guide and Directory	SOFT	Online, Inc.	Microcomputer software directory	.47
EDUCATION				
Bilingual Education Bibliographic Abstracts	BEBA	National Clearinghouse for Bilingual Education	Bilingual/bicultural education	.14
Educational Testing Service Test Collection	ETSF	Educational Testing Service	Tests, evaluation tools, aptitude tests	.42
Education Resource	ERIC	National Institute of Education	Education	.14
Exceptional Child Education Resources	ECER	Council for Exceptional Education	Exceptional child education	.26
Ontario Education Resources Information	ONID	Ontario Ministry of Education	Educational research reports and curriculum guidelines	.26
Resources in Computer Education	RICE	Northwest Regional Educational Laboratory	Computer applications in education	.26
Resources in Vocational Education	RIVE	The National Center for Resources in Vocational Education	Vocational education	.14
School Practices Information File	SPIF	BRS Education Service Group	School practices	.14
Texas Education Computer Cooperative Database	TECC	Texas Education Computer Cooperative	Educational software evaluations	.28
Vocational Education Curriculum Materials	VECM	National Center of Research in Vocational Education	Vocational and technical materials	.14

*Prices listed above are subject to change.

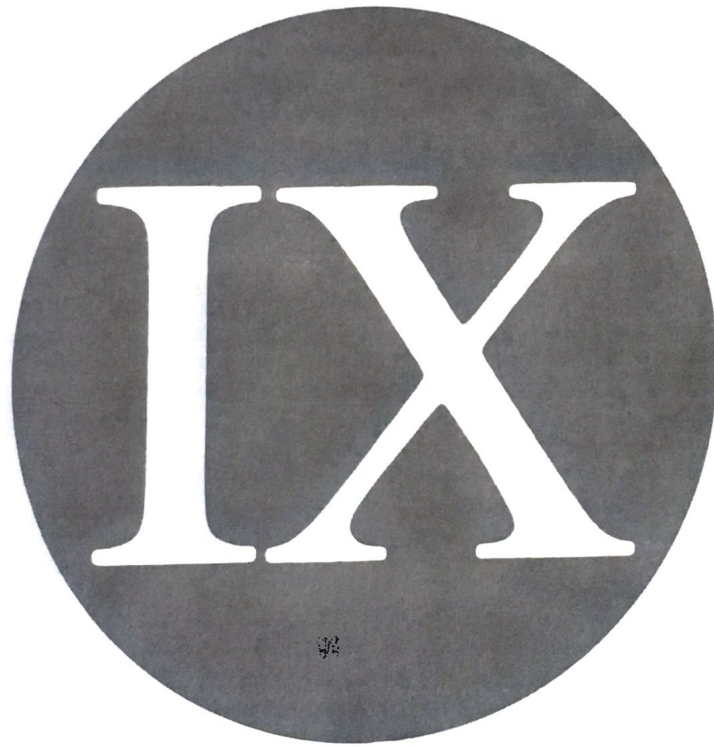
DATABASE	LABEL	PRODUCER	DESCRIPTION	PRICE PER MINUTE*
SOCIAL SCIENCES/HUMANITIES				
ABLEDATA	ABLE	National Rehabilitation Information Center	Rehabilitative aids	.28
Ageline	AARP	American Association of Retired Persons	Issues and research in aging	.37
Arts & Humanities SEARCH	AHCI	Institute for Scientific	Arts, humanities, literature Information	.37
Catalyst Resource on the Workforce and Women	CRFW	Catalyst Library	Women in workforce	.35
Family Resources	NCFR	National Council on Family Relations	Marriage and family literature	.72
Interagency Rehabilitation Research Information System	IRRI	Interagency Committee on Handicapped Research, National Institute on Handicapped Research	Descriptions of research involving rehabilitation	.14
Legal Resource Index	LAWS	Information Access Company	Printed legal information indexed	.47
Linguistics and Language Behavior Abstracts	LLBA	Sociological Abstracts	Language behavior, linguistics	.47
Mental Measurements Yearbook	MMYD	Buros Institute of Mental Measurements	Standardized testing materials	.47
PAIS International (Public Affairs Information Service)	PAIS	Public Affairs Information Service	All social sciences	.30
PsycINFO	PSYC	American Psychological Association	Psychology	.33
REHABDATA	NRIC	National Rehabilitation Information Center	Rehabilitation literature	.14
Religion Index	RELI	American Theological Library Association	Religion	.32
Social SCISEARCH (and backfile)	SSCI SSCB	Institute for Scientific Information	Social science	.47
Social Work Abstracts	SWAB	National Association of Social Workers, Inc.	Social work	.33
Sociological Abstracts	SOCA	Sociological Abstracts	Sociology and related disciplines	.47

*Prices listed above are subject to change.

DATABASE	LABEL	PRODUCER	DESCRIPTION	PRICE PER MINUTE*
SCIENCES/MEDICINE				
ACS Journals Online	CFTX	American Chemical Society	Chemistry journals	.56
AGRICOLA	CAIN	National Agricultural Library (NAL)	Agriculture	.23
BIOSIS Previews (and Backfile)	BIOL BIOB	Biosciences Information Service	Biological sciences	.30
CA Search (and Backfile)	CHEM CHEB	Chemical Abstracts Service	Chemistry	.65
Combined Health Information Database	CHID	Combined Health Information Database	Arthritis, diabetes and health education	.19
Consumer Drug Information Database	CDIF	American society of Hospital Pharmacists	Full-text consumer drug information	.37
Drug Information Fulltext	DIFT	American Society of Hospital Pharmacists	Full-text information on current and investigational drugs	.37
Health Planning and Administration	HLTH	National Library of Medicine (NLM)	Health economics, administration and planning	.51
HEALTHLAWYER	HLWR	American Hospital Association	Health care law (members)	.58
			(non-members)	.61
INSPEC (and Backfile)	INSP INSB	Institute of Electrical Engineers	Engineering	.35
International Pharmaceutical Abstracts	IPAB	American Society of Hospital Pharmacists	Pharmaceutical science	.72
IRCS Medical Science Database	IRCS	IRCS Medical Science	Full-text of biomedical research	.47
Kirk-Othmer Encyclopedia of Chemical Technology	KIRK	John Wiley and Sons, Inc.	Chemistry and chemical engineering	.47
MathSci	MATH	American Mathematical Society	Mathematics, statistics, and computer science	.30
Medical and Psychological Previews	PREV	BRS/Saunders	Clinical psychology and medical literature	.51
MEDLINE (and Backfiles)	MESH MS80 MS75 MS70	National Library of Medicine (NLM)	Medicine, nursing, and dentistry	.51
National Environmental Data Referral Service Database	NEDS	U.S. Dept. of Commerce, National Environmental Data Referral Service	Public, private environmental data sources	.26
National Technical Information Service	NTIS	National Technical Information Service	Government reports, all areas	.19
Nursing and Allied Health Literature	NAHL	CINAHL Corporation	Nursing and health care	.47
Robotics Information	RBOT	EIC/Intelligence, Inc.	Artificial intelligence, robots	.28
Sport Database	SFDB	Sport Information Resource Centre	Sports and sport medicine	.35

*Prices listed above are subject to change.

S E C T I O N N I N E



ACADEMIC PROGRAMS

National Degree Programs

- **Associate in Arts**
- **Associate in Science in Management**
- **Bachelor of Arts**
- **Bachelor of Science in Business Administration**

In our rapidly changing society, few credentials open as many doors as a college degree. Yet while college courses and programs are in plentiful supply, they are not generally accessible to the working adult who is cut off from continuing education by the barriers of time and place. Moreover, few college programs cater to the special needs of adults starting or returning to college.

The National Degree Programs offered via the Electronic University Network represent a new opportunity for adult learners to earn fully-accredited degrees and academic certificates. The programs enable you to take classes from instructors, colleges, and universities located all over the country and apply course credits you earn toward one of four national degrees or six specialized certificates.

Students can enter these very special National Degree Programs through the Electronic University Network. Authorized and developed under the auspices of the New Jersey Department of Higher Education, Thomas A. Edison State College coordinates and administers the National Degree Programs and grants Bachelor Degrees both in the Arts and in Science in Business Administration. Associate Degrees both in Arts and in Science in Management, and six specialized certificates in business and computer-related areas are also available.

Why are the National Degree Programs so Special?

The National Degree Programs are designed to enable you to take advantage of the best course offerings available, while achieving your academic goals in a variety of flexible and pragmatic ways.

Importantly, you are not limited to or forced to take courses from one college. You may select from a wide variety of interesting courses offered by a spectrum of accredited universities and from master teachers and subject matter experts located all over the country. And, as part of this exciting national program, counselors are trained to help you select and coordinate courses from different sources which will be tailored to your career goals, degree requirements and lifestyle.

Course Options and Flexible Modes of Instruction

To earn credit toward your chosen degree or certificate, you can utilize any of the modes of instruction outlined below:

1. You can take college classes through the Electronic University Network, at your own pace, in your own home, at any hour of the day or night, via your own personal computer.
2. You can attend on-campus classes at a school in your own region, or at any fully-accredited college or university – as long as the courses meet the curriculum requirements for the National Degree in which you are enrolled.
3. You can even take traditional written correspondence courses from accredited universities and apply such credits toward your national degree.

Can College Work Already Completed Count Toward Your Degree?

1. Yes, previous courses successfully completed at accredited colleges or universities can be transferred and applied toward a chosen degree, if these courses meet the curriculum requirements of the degree. Counselors at Thomas A. Edison State College (or) at the college offering the degree program will work with all students to evaluate and match previous coursework against the various degrees.
2. Further, many adults have acquired more college-level knowledge than they are aware of, and often this knowledge can be translated into credit. Under a unique portfolio assessment program, you can turn work experience or skills gained outside the classroom into college credit, by taking equivalency exams or by documenting acquired college-level knowledge.

Thus, many adults find they are able to begin National Degree Programs with a significant number of credits already accumulated toward their degree.

Why Is Thomas A. Edison State College Best Qualified to Administer the National Degree Programs?

Thomas A. Edison State College is one of a very select number of fully-accredited universities throughout the nation authorized to grant external degrees without requiring attendance on its campus. Edison degree programs are designed to serve the adult learner and to provide many options for completing the curriculum requirements. Thomas A. Edison State College is accredited by the Middle States Association of Colleges and Schools.

The success of Edison's alumni is remarkable and provides the clearest reflection of the high esteem an Edison degree receives from the academic community. Edison's graduates have attended over 150 graduate schools, including most Ivy League schools. Most impressive, however, is the fact that approximately 50% of Edison's alumni apply to graduate schools and over 85% of these applicants are accepted into the graduate school of their *first* choice.

What Is the Role of the Electronic University Network?

The Electronic University Network is the educational telecommunications system that makes it possible for you to take classes from professors, colleges and universities all across the country via your personal computer. The Electronic University Network itself functions as a delivery system and issues no college credit.

National Degree Programs in Liberal Arts

Even in a world of increasing specialization, many educators and employers maintain that a strong, well-rounded background in the liberal arts forms the basis for the best education. The Electronic University Network grants access to two National Degree Programs in liberal arts which offer tremendous flexibility when choosing an area of concentration. The Associate in Arts is a 60 credit program; the Bachelor of Arts offers a more extensive liberal arts curriculum of 120 credits.

National Degree Programs in Business

More than ever before, American students expect their educational experiences to prepare them for the professional world, and few credentials are more in demand than a degree in business.

The Associate in Science in Management offered over Electronic University Network is a 60-credit business program offering a variety of specialization options. The Bachelor of Science in Business Administration, a 120 credit program offered over the network, requires you to complete basic liberal arts courses as well as demonstrate a high degree of competence in business subjects.

**ASSOCIATE IN ARTS
COURSE CURRICULUM
NATIONAL DEGREE PROGRAM**

<u>Subject Category</u>	<u>Semester Hour Credits</u>
Liberal Arts Requirements	48
Written Expression	6
Humanities	12
Social Sciences	12
Natural Sciences/Mathematics	
Mathematics or Computer Science	3
Other Natural Sciences/Mathematics	6
Liberal Arts Electives	9
Free Electives	12
	<hr/>
TOTAL	60

**ASSOCIATE IN SCIENCE IN MANAGEMENT
COURSE CURRICULUM
NATIONAL DEGREE PROGRAM**

<u>Subject Category</u>	<u>Semester Hour Credits</u>
Liberal Arts Requirements	30
Written Expression	6
Humanities	6
Social Sciences	
Microeconomics	3
Electives	6
Natural Sciences/Mathematics	
Mathematics/Computer Science	3
Other Natural Sciences/Mathematics	3
Liberal Arts Electives	3
Management Core	15
Introductory Accounting	6
Introduction to Business Law	3
Computers and Data Processing	3
Introduction to Business	3
Management Option	12
Specialized Courses	6
Business Electives	6
Free Electives	3
	<hr/>
TOTAL	60

**BACHELOR OF ARTS
 COURSE CURRICULUM
 NATIONAL DEGREE PROGRAM**

<u>Subject Category</u>	<u>Semester Hour Credits</u>
Liberal Arts Requirements	60
Written Expression	6
Humanities	12
Social Sciences	12
Natural Sciences and Mathematics	12
Liberal Arts Electives	18
Area Concentration	33
33 credits must be distributed among at least three of the following subject areas, with at least 12 semester hours in one subject area:	
Humanities	
Social Sciences/History	
Natural Sciences/Mathematics	
Free Electives	27
	<hr/>
	TOTAL 120

**BACHELOR OF SCIENCE IN
BUSINESS ADMINISTRATION
COURSE CURRICULUM
NATIONAL DEGREE PROGRAM**

Subject Category	Semester Hour Credits
Liberal Arts Requirements	48
Written Expression	6
Humanities	9-12
Social Sciences	
Economics	6
Electives	3-6
Natural Sciences/Mathematics	9-12
Liberal Arts Electives	9-12
Business Core Requirements	33
Computers and Data Processing	3
Introduction to Business Law	3
Introductory Accounting	6
Introductory Marketing	3
Statistics	3
Introduction to Operations Management	3
Principles of Finance	3
Business in Society	3
Business Policy	3
Management Policy	3
Business Specialization (General Management)	18
18 credits must be distributed among at least four of the following areas of specialization:	
Accounting	
Finance	
Management of Human Resources	
Marketing	
Operations Management	
Business Electives	9
Free Electives	12
TOTAL	120

linking people to a world of education



“ The nearest college to our farm is in the next county. Using the network, I’ve now been able to enroll in a management program which is really helping us with our farming business in these changing times. ”

Master of Business Administration (MBA) Program

Perhaps the most coveted degree above the undergraduate level is the MBA – increasingly a requirement for management level positions. The MBA provides entree into a variety of business and academic circles, and is often a prerequisite for senior leadership or job advancement.

The Electronic University Network currently offers MBA candidates access to John F. Kennedy University's external MBA program. John F. Kennedy University is the nation's first upper-division and graduate university founded solely for adults. Established in 1964, with the belief that lifelong education is the right of all who seek it, John F. Kennedy University provides programs designed for adult learners, most of whom have work or family responsibilities.

Located in the San Francisco Bay Area, John F. Kennedy is fully accredited by the Western Association of Schools and Colleges, and is an affiliate member of the American Assembly of Collegiate Schools of Business. John F. Kennedy University offers an exceptional variety of educational facilities, including eight campuses situated in the San Francisco Bay Area.

The university attracts its faculty from renowned leaders in every field they teach. In fact, it is the philosophy of JFK university that the best instructors for adults are those who practice what they teach. JFK faculty includes leaders from industry, law firms, government agencies and professional practices. Kennedy students come from all parts of the United States and more than twenty-five nations, with unusually diverse professional and personal backgrounds. The result of this blending of highest quality instruction with motivated adult students is excellence in education.

MBA Program Requirements

The Master of Business Administration Program offered through John F. Kennedy University requires that you successfully complete 51 units of coursework at the graduate level. The courses, as outlined in this section, fall into three categories: core, specialization, and integrative courses.

There are certain undergraduate prerequisites to the MBA degree which must be fulfilled before you register for the graduate level course in the same topic. (For example, an undergraduate accounting course is necessary before you can register for the graduate level Managerial Accounting course.) If you have not already completed the prerequisite requirements for the degree, the undergraduate course prerequisites can be taken through the Electronic University Network. A list of course prerequisites precedes the MBA curriculum outlined on the following page; full course descriptions can be found in section X of this catalog.

In addition to all of the MBA courses that can be taken electronically through the network, the John F. Kennedy University Master's Program features dynamic seminars at regional locations. Here, students have the ability to interact with prestigious professors and speakers, and meet their instructors and fellow classmates face-to-face. The on-site seminar provides an enriched academic experience designed to foster personal growth, professional development, self-confidence and self-discovery. Professional contacts initiated at these seminars have proven to be extremely beneficial to students long after the degree program is completed.

Counselors at JFK University are available to provide information regarding requirements and application into this MBA program. A special, toll-free number, 800-227-4JFK, has been established to facilitate your inquiries.

MASTER OF BUSINESS ADMINISTRATION UNDERGRADUATE COURSE PREREQUISITES

Introductory Accounting
 Economics I: Microeconomics
 Economics II: Macroeconomics
 Introduction to Business Law
 Statistics
 Computers and Data Processing

MASTER OF BUSINESS ADMINISTRATION COURSE CURRICULUM

Subject Category	Quarter hour credits
Core Courses	21
Marketing Management	3
Financial Management	3
Management in Action	3
Management Communications (must complete in first 9 credits)	3
Quantitative Methods	3
Human Resources Management	3
Organization and Management Theory	3
Specialization Courses	24
Managerial Accounting	3
Economic Analysis for Management Decision-Making	3
Topics in International Business	3
Problem Solving	3
Labor Relations	3
Computer and Information Systems in Organization	3
Ethical Issues in Management	3
Project Management	3
Integrative Courses	6
Strategic Planning	3
Policy Implementation	3
	TOTAL 51

linking people to a world of education



“ I’ve been teaching for many years – and now finally, through the network, I’m able to give every student the type of personalized individual attention I feel they deserve. ”

Certificate Programs

- **Accounting**
- **Finance**
- **Management of Human Resources**
- **Marketing**
- **Operations Management**
- **Information Management**

An accredited certificate is a short-term, 18-19 credit academic program which concentrates your study in a specific field. Many students who feel the need to emphasize a specialized academic area elect to earn an accredited certificate rather than undertake an entire degree program. This is particularly true of working adults who require specialization in a given field aimed at job advancement or a career change.

Whether you are about to enter the job market for the first time, are seeking advancement within your organization, or are planning to change careers, academic credentials often count heavily in your favor. A certificate documenting recent concentrated study in a field that is job or industry-specific is especially relevant if your degree was earned years ago or if your degree is not directly applicable to your chosen field.

If you are beginning college, an accredited certificate will provide not only an academic credential that documents your skill but also a foundation for later completion of an associate or baccalaureate degree. Most, if not all, the credits you acquire for your certificate may be applied toward a National Degree.

If you are currently pursuing a degree, you may obtain certificates to give you interim college credentials and/or document your proficiency in areas outside your chosen specialization.

If you have already obtained a degree, you may obtain a certificate to strengthen its value in the job market, particularly if your degree is not suited to your chosen field.

Certificate programs are currently available over the Electronic University Network through the National Degree Program administered by Thomas A. Edison State College, and through John F. Kennedy University.

CERTIFICATE IN ACCOUNTING

National Degree Program

This certificate consists of 18 academic credits to be selected from the courses listed below. Titles of courses required for the certificate are preceded by an asterisk (*). Full course descriptions can be found in Section X of the catalog.

- Introduction to Accounting (6 credits)
- * Intermediate Accounting I (3 credits)
- * Intermediate Accounting II (3 credits)
- * Managerial Accounting I (3 credits)
- Managerial Accounting II (3 credits)
- * Advanced Financial Accounting (3 credits)
- Tax Accounting (3 credits)

CERTIFICATE IN FINANCE

National Degree Program

This certificate consists of 18 academic credits to be selected from the courses listed below. Titles of courses required for the certificate are preceded by an asterisk (*). Full course descriptions can be found in Section X of the catalog.

- Principles of Finance (3 credits)
- * Corporate Finance (3 credits)
- * Financial Institutions and Markets (3 credits)
- International Finance and Trade (3 credits)
- * Public Finance (3 credits)
- * Security Analysis and Portfolio Management (3 credits)
- Advanced Security Analysis and Portfolio Management (3 credits)

CERTIFICATE IN

MANAGEMENT OF HUMAN RESOURCES

National Degree Program

This certificate consists of 18 academic credits to be selected from the courses listed below. Titles of courses required for the certificate are preceded by an asterisk (*). Full course descriptions can be found in Section X of the catalog.

- * Principles of Management (3 credits)
- * Labor Relations and Collective Bargaining (3 credits)
- Advanced Labor Relations and Collective Bargaining (3 credits)
- * Organizational Behavior (3 credits)
- Advanced Organizational Behavior (3 credits)
- * Organizational Theory and Organizational Analysis (3 credits)
- Advanced Organizational Theory and Organizational Analysis (3 credits)
- Public Personnel Management (3 credits)

CERTIFICATE IN MARKETING

National Degree Program

This certificate consists of 18 academic credits to be selected from the courses listed below. Titles of courses required for the certificate are preceded by an asterisk (*). Full course descriptions can be found in Section X of the catalog.

- * Introduction to Marketing (3 credits)
- * Marketing Communications (3 credits)
- * Channels of Distribution (3 credits)
- * Marketing Research (3 credits)
- Marketing Management Strategy I (3 credits)
- Marketing Management Strategy II (3 credits)
- Statistics (3 credits)
- Sales Management (3 credits)

CERTIFICATE IN OPERATIONS MANAGEMENT

National Degree Program

This certificate consists of 18 academic credits to be selected from the courses listed below. Titles of courses required for the certificate are preceded by an asterisk (*). Full course descriptions can be found in Section X of the catalog.

- * Introduction to Operations Management (3 credits)
- * Computers and Data Processing (3 credits)
- * Quantitative Managerial Decision Making (3 credits)
- Materials Management and Inventory Control (3 credits)
- Transportation and Traffic Management (3 credits)
- * Management Information Systems (3 credits)
- Work Methods and Measurement (3 credits)
- Management of Quality Control (3 credits)

CERTIFICATE IN INFORMATION MANAGEMENT

John F. Kennedy University

The objective of this Certificate is to provide a strong foundation in the use and management of computer based business information systems. For students with little or no general management experience, foundation courses in basic business skills are included. The program emphasizes the management of computer systems, their use in problem solving, and the human factors which must be considered in implementing and using computer systems. Credit by assessment can be substituted for the Foundation Courses.

Foundation Courses

- * Principles of Management (3 quarter units)
- * Business Communication (3 quarter units)

Certificate Program Courses

- * Computer Applications (4 quarter units)
- * Computers and Data Processing (3 quarter units)
- * Telecommunication in Business (3 quarter units)
- * Human Factors in Automation (3 quarter units)
- * Principles of Records Management (3 quarter units)
- * Problem Solving with Computers (3 quarter units)

S E C T I O N T E N



COURSE OFFERINGS

This section contains a complete listing of courses available through the Electronic University Network from Spring 1986 through Spring 1987. Enclosed with your catalog is a list of credit course offerings for the current term. To obtain future lists of course offerings or to check on the availability of openings in current term offerings, call 800-22LEARN, or 800-44LEARN within California.

Unless otherwise indicated, all courses are available for IBM™, IBM compatibles, Apple™ II series, and Commodore™ computers.

A NOTE ON PREREQUISITES TO CREDIT COURSES:

If a course has a prerequisite, it is listed at the end of the course description. An equivalent course from another college or university may be substituted for the Electronic University Network course prerequisite listed in the catalog.

linking people to a world of education

“There is no doubt that new technologies are going to revolutionize education much as the printing press did 100 years ago. TeleLearning Systems, Inc., is at the forefront of this development and promises to be a major breakthrough in advancing the teaching-learning process in new and exciting ways.”

KENNETH E. YOUNG

*Executive Director
National University
Continuing Education
Association*

Courses for Credit

- **Undergraduate Courses for Credit**
- **Graduate Courses for Credit**

The credit courses listed below are taught and delivered through the Electronic University Network system by instructors, colleges and universities located throughout the United States.

Course credits are issued only by fully accredited institutions; the Electronic University Network itself functions as a communications link and issues no college credits. All course credits you earn will be recorded at the delivering college or university. Upon successful completion of the course and final exam, you will receive a letter of course completion or a transcript from the delivering institution.

If you should later require additional transcripts of your coursework to be sent to another school, professional society, or employer, you can request the college where you earned the credit to prepare a credit transcript. Each institution has its own fee for this transcript service.

If you simply wish to take a course or a number of individual courses listed below without having the credit applied toward a degree, you can register for your course of choice simply by contacting an Enrollment Counselor at the 800 number. In this case, you are not required to enroll at a particular college or university.

If your goal is to combine courses listed below toward an accredited certificate or degree program, plan to use the Electronic University Network Counseling Service. The Counseling Service will provide details on the selection of a college or university of your choice and the curriculum requirements.

UNDERGRADUATE COURSES FOR CREDIT: BUSINESS

ACCOUNTING

Introductory Accounting

#4660 (6 credits)

Emphasizes financial and managerial accounting. The course teaches skills to produce financial statements, reports, and other documents of interest to company managers, bankers, investors, and others who must make a financial assessment of a company. Also covered is the use of accounting data for internal purposes to help management in the planning and controlling functions of a company.

Course Price: \$375

This course utilizes a Standardized National Examination (CLEP) as the final exam. See section VI of this catalog for exam description.

Tax Accounting

#4661 (3 credits)

A comprehensive coverage of the federal income tax structure as it pertains to individual taxpayers, partnerships, and corporations. Topics include classification of taxpayers, determination of gross income, exemptions, taxable income, computation of tax, special tax computations, and credits against tax.

Course Price: \$225

Intermediate Accounting I

#4705 (3 credits)

Covers the conceptual basis and the actual preparation and interpretation of financial statements for corporations. Topics include accounting standards, accounting for assets and liabilities, balance sheets, income statement formats, and revenue recognition.

Prerequisite: #4660 Introductory Accounting

Course Price: \$225

Intermediate Accounting II

#4706 (3 credits)

Topics include accounting for stockholders' equity, leases, pension costs, earnings per share, presentation of accounting changes, and statements of changes in financial position.

Prerequisite: #4705 Intermediate Accounting I

Course Price: \$225

Managerial Accounting I

#4707 (3 credits)

Covers concepts and techniques in the development of accounting information for product costing by manufacturing organizations. Topics include cost classifications, job orders, process and standard costs systems, comprehensive budgeting techniques, and the use of cost data for decision-making.

Prerequisites: #4705-4706 Intermediate Accounting I and II

Course Price: \$225

Managerial Accounting II

#4708 (3 credits)

Integrates concepts from managerial decision-making, organizational behavior, and economics with managerial accounting. Topics include regression for statistical cost estimation; linear programming for product-mix decisions; learning curve, inventory, and queuing models; performance evaluation systems; and the relationship between performance evaluation and employee behavior.

Prerequisite: #4707 Managerial Accounting I

Course Price: \$225

Advanced Financial Accounting

#4709 (3 credits)

Covers accounting topics related to business combinations, partnerships, and the effects of foreign exchange on financial statements, with attention to relevant pronouncements of the Accounting Principles Board and the Financial Accounting Standards Board.

Prerequisites: #4705-4706 Intermediate Accounting I and II

Course Price: \$225

COMPUTER APPLICATIONS

Computer Applications

#7001 (4 quarter units)

Review of the theory and use of word processing, spreadsheet, and data base management software. Development of skills by practicing the use of the programs. Understanding of when and how to use each program. Review of the use of computerized accounting systems.

Course Price: \$415

Word Processing Fundamentals

#4209 (3 credits)

The fundamentals of word processing systems and their use in creating, editing, printing, storing and retrieving documents. No knowledge of a particular word processing system or program is required.

Course Price: \$225

Data Base Management

#4210 (3 credits)

This course provides a generic introduction to one of the most useful microcomputer-based applications. It is designed for anyone who has moderately large quantities of information to manage and analyze. Topics covered include the structure, functions, and practical applications of data bases.

Course Price: \$225

Computers and Data Processing

#4600 (3 credits)

Covers terminology and basic concepts, and teaches their applications. The focus is on concepts and techniques applicable to a variety of programming languages.

Course Price: \$215

This course utilizes a Standardized National Examination (CLEP) as the final exam. See section VI of this catalog for exam description.

FINANCE

BASIC

#4601 (3 credits)

Elements of the BASIC computer language and its common uses. Introduces BASIC statements and syntax and their applications to everyday problems of business and social sciences. No advanced knowledge of computer programming is necessary.

Course Price: \$225

Telecommunication in Business

#7002 (3 quarter units)

Concepts and terminology of data communication, network design, and distributed office information systems. Explanation of equipment, protocols, architectures, and transmission alternatives.

Course Price: \$325

Human Factors in Automation

#7003 (3 quarter units)

Review and analysis of the relationship between people and automation in organizations, from the perspective of both management and employees. Effect of computers on organizational structure, power relationships, management styles, and job satisfaction. Comparison of both positive and negative impact of computers on people.

Course Price: \$325

Problem Solving with Computers

#7005 (3 quarter units)

A review of the analytic and computer tools available for problem solving. Relationship between individual problem solving styles and the use of computers. Development of a problem solving model and discussion of how computer based tools can be used with the model.

Course Price: \$325

Principles of Finance

#4606 (3 credits)

Designed to familiarize the student with managerial finance and the environment within which the financial decision-maker functions. Intended for students who will not go on to further studies in finance, as well as for students who will find a career in the field.

Prerequisite: #4660 Introductory Accounting

Course Price: \$225

Corporate Finance

#4607 (3 credits)

Treats financial functions typically utilized by a practitioner of finance within a firm or institution. Following a brief review of the scope and nature of financial management and ratio analysis, major subjects of inquiry include funds flow analysis, management of current assets and liabilities, equity capital, mergers, and acquisitions.

Prerequisites: #4660 Introductory Accounting and #4606 Principles of Finance

Course Price: \$225

Money and Banking

#4608 (3 credits)

A study of the commercial banking system, the federal reserve system and the international monetary system. Topics covered include banking history, monetary theory, supply and demand, and governmental fiscal operations and policies.

Prerequisite: #4606 Principles of Finance

Course Price: \$225

Financial Institutions and Markets

#4700 (3 credits)

An analysis of the financial structures of the United States. The course includes an examination of the nature of financial markets and covers major topics in international finance.

Prerequisite: #4606 Principles of Finance

Course Price: \$225

International Finance and Trade

#4701 (3 credits)

An introduction to international financial management. Topics covered include the international monetary and economic environment, the institutions and instruments of international finance, and special aspects and problems of international financial management.

Prerequisite: #4606 Principles of Finance

Course Price: \$225

Public Finance

#4702 (3 credits)

An introduction to expenditures, taxes, and debts of federal, state, and local governments. The course examines public budgets and intergovernmental fiscal relationships and their economic implications for financial activities.

Course Price: \$225

Security Analysis and Portfolio Management

#4703 (3 credits)

An introduction to securities investment. Topics covered include investment vehicles, the stock market and securities brokerage, analysis of company stock as an investment, and the theory and practice of portfolio management.

Course Price: \$225

Advanced Security Analysis and Portfolio Management

#4704 (3 credits)

An advanced study of the analysis of investments and the management of securities portfolios. Topics include economic factors underlying securities values, methods of determining personal risk utility, advanced tools of securities analysis, the role of major securities exchanges, and advanced techniques of portfolio management.

Prerequisite: #4703 Security Analysis and Portfolio Management

Course Price: \$225

UNDERGRADUATE COURSES FOR CREDIT: BUSINESS

Introduction to Business Law

#4630 (3 credits)

Emphasizes the functions of contracts in American business law, but also includes material in the history and sources of American law, legal systems, and other procedures, agency and employment, sales, and other topics.

Prerequisite: #4620 Introduction to Business

Course Price: \$215

This course utilizes a Standardized National Examination (CLEP) as the final exam. See section VI of this catalog for exam description.

Principles of Business Policy

#4654 (3 credits)

A capstone review of senior management decision areas, using concepts usually covered in an undergraduate course in business policy or corporate planning. Topics include corporate goals and resources, financial analysis, long-range plans, policy models, and management strategy. Case problems are used to integrate theories and apply concepts to simulated situations.

Course Price: \$225

Advanced Labor Relations and Collective Bargaining

#4714 (3 credits)

Detailed analysis of the role, structure, and practice of modern industrial relations. The course emphasizes integration of the major principles of labor relations and collective bargaining and their application to specific problems. Topics covered include the significance of collective bargaining in a modern industrial society, the impact of collective bargaining on societal behavior and public policy, the negotiation and administration of a labor contract, and the relationships among unions, business, government, and the public.

Prerequisite: #4626 Labor Relations and Collective Bargaining

Course Price: \$225

Advanced Organizational Behavior

#4715 (3 credits)

Detailed analysis and integration of topics in organizational behavior, with emphasis on behavioral aspects of modern organizations and applications of basic principles to specific problems. Topics include research on leadership, power, and authority; change in complex organizations; organizational conflict and resolution; organizational development; and the role, norms, and behavior of groups in organizations.

Prerequisite: #4628 Organizational Behavior

Course Price: \$225

Organization Theory and Organizational Analysis

#4716 (3 credits)

Analyzes the historical and theoretical development of systems of organization and the emerging concepts in organization theory. Topics covered include classical and modern models, measures of organizational effectiveness, the impact of data-based management information systems on organizational structure and internal relationships, and the impacts of modern technology and complex organizational structure on management problem-solving and decision-making.

Course Price: \$225

Advanced Organization Theory and Organizational Analysis

#4717 (3 credits)

Relates organization theory and organizational analysis to human resources management in a complex organization. Emphasizes the ability to analyze complex structures and apply concepts, techniques, and theories to an evaluation of organizational effectiveness. Covers the effect of classical on modern organizational structure, bureaucratic forms of organization, neoclassical and modern organization theory, the relationship between organizational structure and modern technology, and the applications of theoretical knowledge to management problem-solving and decision-making.

Prerequisite: #4716 Organization Theory and Organizational Analysis

Course Price: \$225

Public Personnel Management

#4718 (3 credits)

Stresses the principles and practices of personnel management in the public sector. Topics include recruitment, placement, training, health plans, incentive and merit systems, collective bargaining, employee development and benefits, retirement planning, human resources planning, EEO and Affirmative Action, and intergovernmental personnel relationships.

Course Price: \$225

Materials Management and Inventory Control

#4719 (3 credits)

Presents an integrated approach to the control and physical movement of raw materials, components, and finished goods from the supplier through the manufacturer and distributor to the ultimate user. Focus is on the concepts, methods, and functions of inventory control and its relationship to materials management.

Course Price: \$225

Transportation and Traffic Management

#4720 (3 credits)

Presents an overview of the management of traffic and transportation systems, stressing the economics of moving people and goods. Topics include freight classification; rate formulation and negotiation; mode, route, and carrier selection criteria; traffic demand forecasting; and government regulation of the transportation industry.

Course Price: \$225

Management Information Systems

#4721 (3 credits)

Analysis and design of computer-based information systems. Topics include business systems analysis; examination of data requirements; data collection, classification, transmission, and display; data base organization; management reporting systems; on-line real-time systems, and software related to system design.

Course Price: \$225

UNDERGRADUATE COURSES FOR CREDIT: BUSINESS

Work Methods and Measurements

#4722 (3 credits)

Covers work analysis, time study, and work measurement practices. Specific topics include stop-watch time study, micro-motion study, establishment of allowances by stop watch, work sampling and simplification studies, the establishment and use of predetermined time values, and the construction and application of work measurement formulas.

Course Price: \$225

Management of Quality Control

#4723 (3 credits)

Surveys the statistical quality control function in industry, including principles of organization and management as well as techniques of statistical quality control and acceptance sampling systems and procedures.

Prerequisite: #4602 Statistics

Course Price: \$225

STATISTICS

Statistics

#4602 (3 credits)

Demonstrates how statistics are used to help analyze practical problems. Covers such topics as frequency distribution, sampling, probability, and measures of variability.

Prerequisite: #4420 College Algebra

Course Price: \$225

MARKETING

Introductory Marketing

#4675 (3 credits)

The course examines marketing in the economy, buyer behavior and consumption patterns, government-marketing interactions, marketing functions, and institutions, and selected issues and policies related to marketing problems, strategies, and decisions. Students are given a basic knowledge of demographic and economic trends that are important to marketing, of wholesaling and retailing institutional structures, and of the classification of consumer and industrial goods.

Course Price: \$215

This course utilizes a Standardized National Examination (CLEP) as the final exam. See section VI of this catalog for exam description.

Public Relations

#4670 (3 credits)

An overview of the public relations field. Covers such topics as fundamental concepts of public relations, how public opinion is formed and measured, techniques of communication for mass impact, and management skills required to plan and carry out a successful public relations program.

Course Price: \$225

Marketing Communications

#4671 (3 credits)

A survey of the promotional area of the marketing mix. Covers the role of communication; advertising objectives, strategies, and plans; advertising program design, implementation, and evaluation; advertising budgets; media selection; sales promotion; sales force organization, recruitment, and training; sales management goals, policies, and strategies; sales force compensation, motivation, and evaluation.

Prerequisite: #4675 Introductory Marketing

Course Price: \$225

Channels of Distribution

#4672 (3 credits)

A survey of the channels of distribution or place area of the marketing mix. Covers seller distribution goals, policies, and strategies; buying policies; practices and relationships with sellers; channel leadership; channel systems; channel-design decision-making; channel incentive; and promotion strategies and programs.

Prerequisite: #4675 Introductory Marketing

Course Price: \$225

Sales Management

#4673 (3 credits)

Principles and practices in planning, organizing, and controlling the sales force. Selection, training, compensating, supervising, and motivating salespeople. Analysis of sales potential and costs.

Course Price: \$225

Advertising

#4674 (3 credits)

The essentials of advertising: functions, applications, current developments. Preparation of the advertisement, principles of layout and copy, evaluation of media, the advertising department, the advertising agency, and ethical and legal aspects.

Course Price: \$225

Marketing Research

#4710 (3 credits)

Covers fundamental concepts, principles, and practices in the area of marketing research. Included are problem definitions, data collection methods, sampling, analysis of market research information, data sources, and survey planning.

Prerequisite: #4675 Introductory Marketing

Course Price: \$225

Marketing Management Strategy

#4711 (3 credits)

For the business student specializing in marketing, this course covers concepts which come into play in marketing policy and strategy formulation.

Course Price: \$225

linking people to a world of education



“ With the advent of computer graphics, the whole commercial art industry has changed. It was essential that I become computer literate just to function as a designer. Earning credit for the work made it easy to apply for 100% tuition reimbursement at work. ”

UNDERGRADUATE COURSES FOR CREDIT: HUMANITIES

ENGLISH

Written Expression

#4300 (6 credits)

This course teaches basic writing skills. It requires the writing of a number of short passages, each with a different topic and for a different audience. The student's writing is evaluated on the basis of grammatical correctness, clarity of expression, and appropriateness of style to the audience addressed.

Course Price: \$375

This course utilizes a Standardized National Examination (CLEP) as the final exam. See section VI of this catalog for exam description.

Introduction to Theater

#4302 (3 credits)

The student is introduced to the art of the theater, including dramatic literature, types of drama and of theatrical events, theater design and play production, and criticism.

Course Price: \$225

Introduction to Film

#4303 (3 credits)

An examination of the background and development of the motion picture from its earliest stages to the present. It emphasizes the evaluation of film as an art form, the techniques of film production, theory and esthetics, and film as a cultural, social, and economic force. Important trends and movements, genres, and major influential figures are considered.

Course Price: \$225

Interpretation of Fiction

#4304 (3 credits)

This course emphasizes comprehension, interpretation, and analysis of the forms and techniques of fiction. The student will acquire a broad knowledge of literature and familiarity with basic literary terminology.

Course Price: \$235

Interpretation of Drama

#4305 (3 credits)

This course offers analysis of a number of plays written at various times and in various dramatic forms. Principal dramatic forms, development of dramatic art, and masterpieces of the theater from various periods are all covered.

Course Price: \$235

English Literature

#4306 (6 credits)

This course covers the material that is usually taught in a two-semester, historically-organized survey of English Literature. The course is primarily concerned with major authors and their works, but it also includes study of some minor writers. The student will become acquainted with common literary terms and forms, the basic literary periods, and the historical development of English literature.

Course Price: \$375

This course utilizes a Standardized National Examination (CLEP) as the final exam. See section VI of this catalog for exam description.

Introduction to News Reporting

#4308 (3 credits)

A reporting and writing course emphasizing the development of journalistic skills appropriate to news coverage.

Prerequisite: #4300 Written Expression

Course Price: \$225

American Literature

#4309 (6 credits)

This course focuses on material usually taught in a two-semester survey of American Literature. It deals with the prose and poetry written in the United States from colonial times to the mid-Twentieth Century, emphasizing the content, background, and authorship of literary works.

Course Price: \$375

This course utilizes a Standardized National Examination (CLEP) as the final exam. See section VI of this catalog for exam description.

HISTORY

Western Civilization I: Ancient Near East to 1648

#4350 (3 credits)

This course deals with the civilizations of Ancient Greece, Rome, and the Near East; the Middle Ages; the Renaissance and Reformation; and early modern Europe.

Course Price: \$215

This course utilizes a Standardized National Examination (CLEP) as the final exam. See section VI of this catalog for exam description.

Western Civilization II: 1648 to the Present

#4351 (3 credits)

This course covers material usually taught in the second semester of a two-semester course in Western Civilization. It explores European history from the seventeenth century through World War II and its aftermath. Economic, political, cultural, and social developments such as scientific thought, the Enlightenment, the French and Industrial Revolutions, nationalism, imperialism, the Russian Revolution, and World Wars I and II are also covered.

Prerequisite: #4350 Western Civilization I

Course Price: \$215

This course utilizes a Standardized National Examination (CLEP) as the final exam. See section VI of this catalog for exam description.

American History I: Early Colonizations to 1877

#4352 (3 credits)

This course covers material usually taught in the first semester of a two-semester course in American history. It emphasizes the period of American history from the Spanish and French colonizations to the end of Reconstruction, with the majority of material on the period of nationhood.

Course Price: \$215

This course utilizes a Standardized National Examination (CLEP) as the final exam. See section VI of this catalog for exam description.

UNDERGRADUATE COURSES FOR CREDIT: HUMANITIES AND MATHEMATICS

American History II: 1865 to the Present

#4353 (3 credits)

A course exploring the period of American history from the end of the Civil War to the present, with emphasis on the Twentieth Century.

Prerequisite: #4352 American History I

Course Price: \$215

This course utilizes a Standardized National Examination (CLEP) as the final exam. See section VI of this catalog for exam description.

Modern European History

#4354 (3 credits)

This course covers major economic and social forces shaping life in Europe since 1815, and the efforts of major social groups to cope with and shape these forces.

Prerequisites: #4350-4351 Western Civilization I and II

Course Price: \$225

Afro-American History

#4356 (6 credits)

This course presents material normally taught in an introductory two-semester course in Afro-American History. It covers the the history of black Americans during the periods 1500-1865 (beginning of slavery through the Civil War), 1865-1909 (Reconstruction and its aftermath) and 1909-1968 (beginning of 20th Century through the civil rights era). Emphasis is placed on the issues confronted by black Americans in their struggles for survival and freedom, the key events and individuals related to these issues, and the major historical works in the field.

Prerequisites: #4352-4353 American History I and II

Course Price: \$395

This course utilizes a Standardized National Examination (ACT/PEP) as the final exam. See section VI of this catalog for exam description.

PHILOSOPHY

Introduction to Philosophy

#4550 (3 credits)

Survey of selected basic problems, concepts, and methods in philosophy. Some problems are designed to give the student general preparation for further work in philosophy. Some apply the philosopher's approach to particular problems and subjects the student may encounter in other areas of study.

Course Price: \$235

MATHEMATICS

College Algebra

#4420 (3 credits)

The course includes material on basic algebraic operations; linear and quadratic equations, inequalities, and graphs; algebraic, exponential, and logarithmic functions; theory of equations; and miscellaneous other topics.

Course Price: \$215

This course utilizes a Standardized National Examination (CLEP) as the final exam. See section VI of this catalog for exam description.

Trigonometry

#4421 (3 credits)

The course includes material on trigonometric functions and their relationships, evaluation of trigonometric functions of positive and negative angles, trigonometric equations and inequalities, graphs of trigonometric functions, trigonometry of the triangle, and miscellaneous other topics.

Prerequisite: #4420 College Algebra

Course Price: \$215

This course utilizes a Standardized National Examination (CLEP) as the final exam. See section VI of this catalog for exam description.

Calculus with Elementary Functions

#4422 (6 credits)

Included in the course are topics from both differential and integral calculus, as well as algebraic, trigonometric, exponential and logarithmic functions. The course is primarily concerned with teaching an intuitive understanding of calculus and experience with its methods and applications. Knowledge of preparatory mathematics, including algebra, plane and solid geometry, trigonometry, and analytic geometry, is assumed.

Prerequisites: #4420 College Algebra and #4421 Trigonometry

Course Price: \$375

This courses utilizes a Standardized National Examination (CLEP) as the final exam. See section VI of this catalog for exam description.

UNDERGRADUATE COURSES FOR CREDIT: NATURAL SCIENCES

NATURAL SCIENCES

Physical Science for Non-Scientists I

#4400 (3 credits)

A course designed for non-science majors, covering fundamental ideas of measurement, motion, energy, electricity and magnetism, heat, atomic and nuclear physics, and quantum phenomena.

Course Price: \$225

Physical Science for Non-Scientists II

#4401 (3 credits)

A course designed for non-science majors, covering the physical nature of light and sound, including transmission, refraction, reflection, interference, and resonance. Applications include analysis of musical instruments, acoustics, optical systems, perception of color and sound.

Prerequisite: #4400 Physical Science for Non-Scientists I

Course Price: \$225

Geology

#4402 (3 credits)

The course material covers the structure, composition, and evolution of the earth and the processes that form the earth through geological time.

Course Price: \$225

This course utilizes a Standardized National Examination (ACT/PEP) as the final exam. See section VI of this catalog for exam description.

Biology

#4403 (6 credits)

The course subject matter covers the broad field of biological sciences; organized into three major areas: molecular and cellular biology, organismal biology, and populational biology.

Course Price: \$375

This course utilizes a Standardized National Examination (CLEP) as the final exam. See section VI of this catalog for exam description.

linking people to a world of education



*“ I learned BASIC within three months,
and got credit towards a degree at the
same time. ”*

linking people to a world of education

“Schools and colleges can now offer their curricula and a live, interactive faculty to students, wherever they are, at a reasonable cost, as an alternative learning mode. The potential is mind-boggling. Here is a low-cost telecommunication network specifically designed for education, continuing computer technology, inexpensive hardware, and personalized human instruction.”

DALE PARNELL
*President, American
Association of Community
and Junior Colleges*

UNDERGRADUATE COURSES FOR CREDIT: SOCIAL SCIENCES

ECONOMICS

Economics I: Microeconomics

#4540 (3 credits)

Microeconomics deals with the principles of economics that apply to the functions of groups, organizations, and individuals within the larger economic system. Students will be required to apply analytic techniques to hypothetical situations and to analyze and evaluate interpretations or criticisms of government policies on the basis of simple theoretical models.

Course Price: \$215

This course utilizes a Standardized National Examination (CLEP) as the final exam. See section VI of this catalog for exam description.

Economics II: Macroeconomics

#4541 (3 credits)

Macroeconomics deals with principles of economics that apply to a total economic system. The course emphasizes the determinants of aggregate demand and the monetary and fiscal policies appropriate to particular policy objectives.

Prerequisite: #4540 Economics I:

Microeconomics

Course Price: \$215

This course utilizes a Standardized National Examination (CLEP) as the final exam. See section VI of this catalog for exam description.

POLITICAL SCIENCE

American Government

#4355 (3 credits)

A survey of topics such as institutions and policy processes of the Federal Government, the Federal Courts and civil liberties, political parties and pressure groups, political beliefs and behavior, and the content and history of the Constitution.

Course Price: \$215

This course utilizes a Standardized National Examination (CLEP) as the final exam. See section VI of this catalog for exam description.

Foundations of Political Science

#4530 (6 credits)

This course analyzes the nature of political science, with emphasis on traditional political philosophy, behaviorism, and the main approaches to and theories of the study of politics.

Course Price: \$375

PSYCHOLOGY

General Psychology

#4500 (3 credits)

The course stresses basic facts, concepts, and generally accepted principles of psychology. Among the topics covered are learning and cognition, behavior, personality, perception, motivation and emotion, life-span development, and social psychology.

Course Price: \$215

This course utilizes a Standardized National Examination (CLEP) as the final exam. See section VI of this catalog for exam description.

Human Growth and Development

#4501 (3 credits)

Primary emphasis is placed on early and middle childhood. An understanding of the major theories and research related to physical, mental, emotional, social, and personality development is emphasized, as is the ability to apply this knowledge to child rearing, child care, and educational practices.

Prerequisite: #4500 General Psychology

Course Price: \$215

This course utilizes a Standardized National Examination (CLEP) as the final exam. See section VI of this catalog for exam description.

Psychology of Personality

#4504 (3 credits)

This course covers the development and organization of personality, with evaluation of major theoretical viewpoints, and research on personality structure, dynamics, and change.

Prerequisite: #4500 General Psychology

Course Price: \$225

UNDERGRADUATE COURSES FOR CREDIT: SOCIAL SCIENCES

Psychology of Personal Adjustment

#4505 (3 credits)

An introduction to understanding the maintenance and modification of personality. The class will examine natural and artificially-induced changes in personality and behavior throughout the life cycle. Explores how principles of learning are used to help people adjust their behavior.

Prerequisite: #4504 Psychology of Personality

Course Price: \$225

Introduction to Social Psychology

#4506 (3 credits)

The field of social psychology and methods of social psychological research are introduced. Topics include socialization and its consequences, interpersonal behavior, attitudes and attitude change, influencing and helping others, groups and organization, aggression, and collective behavior.

Prerequisite: #4500 General Psychology

Course Price: \$225

SOCIOLOGY

Introduction to Sociology

#4520 (3 credits)

The course deals with social institutions, stratification, social patterns, processes, and changes, and the sociological perspective. It emphasizes basic facts and concepts as well as general theoretical approaches used by sociologists.

Course Price: \$215

This course utilizes a Standardized National Examination (CLEP) as the final exam. See section VI of this catalog for exam description.

Sociology of the Family

#4521 (3 credits)

The course examines the family as a social institution: family formation and dissolution, life in families, varieties of family experiences, and the future of the family.

Prerequisite: #4520 Introduction to Sociology

Course Price: \$235

linking people to a world of education



“When we opened the bake shop I figured I could pretty much forget about finishing my degree. My first course, “Starting and Managing Your Own Business,” was so convenient and practical, I’m excited about my next course through the Electronic University Network.”

GRADUATE COURSES FOR CREDIT

MBA PROGRAM CORE COURSES

Marketing Management

#MBA545 (3 quarter units)

Key topics of this course include: case studies in marketing strategies, objectives, and policies; managing sales and marketing organizations; managing market research and site location; analysis of buying processes of consumer and industrial markets. Managing of advertising and promotion is also covered.

Course Price: \$395

Financial Management

#MBA555 (3 quarter units)

This course includes case studies of current financial problems of selected firms; sources and uses of business assets; development of the theory of financial management. The nature and scope of controllership as related to organization, policy planning, cost, financial controls, budgeting, capital expenditures, and computerized management control systems are also covered.

Prerequisite: #4660 Principles of Accounting Course

Price: \$395

Management in Action

#MBA600 (3 quarter units)

An overview course: What managers do and why they do it. Factors shaping the activities and purposes of managers and the development of contemporary work organization; the functions, process, and purposes of management; and issues affecting the future of management and managers. Especially for those entering a degree program.

Course Price: \$395

Management Communications

#MBA540 (3 quarter units)

A review of written communications including sentence structure, diction, and style. Emphasis is placed on effective techniques in letters, memos, reports, and other business and management communications.

Course Price: \$395

Quantitative Methods

#MBA520 (3 quarter units)

Applications of correlation, regression, and statistical sampling to practical management problem solving. Use of logic diagrams and decision tables, CPM/PERT charting, and inventory management in management planning, controlling, and decision making.

Prerequisite: #4602 Statistics

Course Price: \$395

Human Resources Management

#MBA584 (3 quarter units)

Managing organizations' human resources to maximize effectiveness and employee satisfaction. Theories of motivation and functions of manager and staff. Techniques for improving the match between individuals and the organization; encouraging individual growth and development.

Course Price: \$395

Organization and Management Theory

#MBA535 (3 quarter units)

The evolution of organization and management theory from the era of scientific management to present-day human resources management theories. Historical, economic, social, cultural, and philosophical influences on the development of organization and management theory. Emphasis on primary sources.

Course Price: \$395

MBA PROGRAM SPECIALIZATION COURSES

Managerial Accounting

#MBA500 (3 quarter units)

Cost-volume-profit relationships, break-even analysis, and other methods of cost behavior analysis; use of the accounting database for managerial decision making; construction of the master budget; basic concepts of standard costing, flexible budgeting, and variance analysis.

Prerequisite: #4660 Introductory Accounting

Course Price: \$395

Economic Analysis for Management Decision-Making

#MBA504 (3 quarter units)

Behavior of markets reacting to supply and demand forces; consequences of alternative market structures and business policy. Supply and demand analysis, consumer behavior, theory of costs and production, pricing and competition, marginal analysis, monetary systems, and economic growth.

Prerequisite: #4540 Economics I: Microeconomics

Course Price: \$395

Topics in International Business

#MBA573 (3 quarter units)

Theory of the multinational enterprise; management of the international business. International aspects of finance, marketing, production, and human resource management. Global strategies planning and decision making. Conflicts between multinationals.

Course Price: \$395

Problem Solving

#MBA601(3 quarter units)

The principles, general process, and theory of problem solving, with emphasis on the use of computers in problem solving activities. A systematic approach to problem solving in an organization. A management tool useful for individuals and groups, requiring mental discipline and freedom of imagination and expression.

Course Price: \$395

GRADUATE COURSES FOR CREDIT

Labor Relations

#MBA560 (3 quarter units)

The evolution of labor-management relations in the U.S. Economic, social, political, and judicial inputs which have led to current laws affecting labor relations and the bargaining process.

Course Price: \$395

Computer and Information Systems in Organizations

#MBA 515 (3 quarter units)

The nature and purpose of information management. The manager as user and director of information systems. The use of computers as a personal management tool. Information needs and computer capabilities. Concepts of programming, systems analysis, and automated office systems.

Prerequisite: #4600 Computers and Data Processing

Course Price: \$395

Ethical Issues in Management

#MBA525 (3 quarter units)

This course offers a practical exploration of the ethical dilemmas confronting today's manager in both private and public sectors.

Course Price: \$395

Project Management

#MBA603 (3 quarter units)

The planning, organization, administration, and control of all elements of a project as represented by the project management plan. It includes the function of business development, contract formulation, design, procurement, construction, cost and schedule control and successful turnover to the client.

Course Price: \$395

MBA PROGRAM INTEGRATIVE COURSES

Strategic Planning

#MBA580 (3 quarter units)

This is the first of a two-course sequence which integrates the MBA program. It establishes the framework for formulating or revising strategy which relates a company's internal situation to its external environment. Topics include analysis of industry and economic trends; perception of needs and opportunities; selection of opportunities; matching of opportunities with resources; formulation of marketing, production, financial and profit policies; and revision of policies in light of change.

Prerequisite: A minimum of 30 quarter units of graduate work.

Course Price: \$395

Policy Implementation

(3 quarter units)

This three-part course which integrates the MBA program is not delivered via the Electronic University Network. Through a flexible seminar program, students will design, implement, and evaluate a major project involving an organization of their choosing. Organization structure, management techniques, planning, and analytical procedures will be explained. Each part of the course will involve intensive interaction with faculty and students. Please contact J.F.K. at 800-227-4JFK for seminar tuition fees.

Prerequisite: #MBA580

Special Course Offerings

The following special course offerings will be available for a limited time and will accept limited student enrollments.

Select colleges and universities will be delivering their courses over the network at varying times throughout the year. Courses listed under the special course offerings section may not be available once all enrollment openings are filled for a particular term. Fortunately, additional special course offerings from colleges and universities across the country will be announced throughout the year.

Institutions delivering the courses below will award full college credit upon successful completion of the course. Unless noted otherwise, courses are awarded undergraduate, semester credits. If appropriate, credit earned can be applied toward the curriculum requirements of your academic degree.

Developers and instructors at each participating college or university will provide their students with individualized instruction and feedback. Individual tuition fees are listed for each course, but there will be additional charges for student materials and services. Specific information about these fees and current course offerings may be obtained by calling the Electronic University Network.

SPECIAL COURSE OFFERINGS

BANK STREET COLLEGE OF EDUCATION,
New York, New York

Methods for Computer Applications in the Classroom

#9001 (3 graduate credits)

This course examines the wide array of productivity tools, instructional software, and programming activities available for use in the elementary school classroom. Methods and strategies for integrating appropriate computer based programs will be analyzed and evaluated.

Tuition: \$390

BOSTON UNIVERSITY,
Boston, Massachusetts

Budgeting and Finance for Non-Financial Managers

#9002

This course teaches the basics of budgeting and finance. The course is intended for non-financial managers and supervisors who are responsible for developing or implementing operating or expense budgets. The course utilizes a singular approach to budgeting and finance which is applicable to all organizations. The course utilizes LOTUS 1-2-3 in case analyses.

Note: This is a non-credit course selected by Boston University to meet the needs of upper and mid-level management.

Tuition: \$310

CALIFORNIA LUTHERAN UNIVERSITY,
Thousand Oaks, California

Business Ethics

#9003 (3 credits)

Business Department

This course is designed to aid students in understanding and resolving moral and ethical issues facing today's business executives and their companies. The topics are designed to raise the students' moral awareness and develop the skills for making moral decisions in a wide variety of practical management settings.

Tuition: \$270

CALIFORNIA SCHOOL OF PROFESSIONAL PSYCHOLOGY,
Berkeley, California

Computers and Organization Development

#9004 (2 graduate credits)

This course is appropriate for students with little or no prior experience with computers. It will provide a basic conceptual and practical understanding of the characteristics and use of computer programs. The subject will be presented both from the standpoint of the computer as a personal productivity tool and the use of computer systems in organizations. The following themes will be explored: history, definitions, and theory; the uses of personal productivity programs; the use of computers in problem solving; and human organizational factors.

Tuition: \$544

CALIFORNIA SCHOOL OF PROFESSIONAL PSYCHOLOGY,
Berkeley, California

Understanding Organizational Finance

#9005 (2 graduate credits)

This course is for those who have no prior financial background. The goal is to provide students with an introductory financial perspective and basic financial literacy to broaden their view of the organization. Accounting principles and conventions are reviewed to enable the preparation and subsequent interpretation of financial statements. Forms of organization, securities markets, investment risk and return, basic financial analysis, and the time value of money are also briefly explored.

Tuition: \$544

NOTE: The two courses listed above can be applied toward a Master's degree in Organizational Behavior from the California School of Professional Psychology.

CALIFORNIA STATE POLYTECHNIC UNIVERSITY,
Pomona, California, Electronic and Computer Engineering Department

Introduction to Electrical Engineering

#9006 (3 quarter units)

This course provides learners with an introduction to the fundamental laws of electrical engineering, applications to circuit analysis and matrix methods.

Tuition: \$120

DeANZA COLLEGE,
Cupertino, California, Language Arts Division

Speedreading

#9007 (2 credits)

This course is designed to help you read faster and understand more of what you read. Using an ancillary "state of the art" software program, you can develop your own goals and learning schedules under the guidance of your course instructor.

Tuition: \$100

EASTERN MICHIGAN UNIVERSITY,
Ypsilanti, Michigan

Marketing Educational Products

#9008 (2 graduate credits)

The development of skills in the analysis and resolution of management problems related to the marketing process; economic, psychological, and sociological characteristics of demand for various educational products; marketing research; educational channels of distribution; advertising; pricing policies and regulations of marketing.

Tuition: \$146

EASTERN MICHIGAN UNIVERSITY,
Ypsilanti, Michigan

Contemporary Selling

#9009 (3 credits)

This course covers basic principles of personal selling that are applicable to any product and/or service in today's marketplace. Emphasis is placed on professional attitudes and performance.

Tuition: \$157.25

SPECIAL COURSE OFFERINGS

GOVERNORS STATE UNIVERSITY,
University Park, Illinois

Stress Management

#9010 (3 undergraduate/graduate credits)

This course will focus on an analysis of the nature of stress: its sources, reactions, risks and methods of prevention in business and service organizations. Managers, administrators, and employees at all levels will have the opportunity to analyze and evaluate hypothetical situations necessary for the improvement of productivity and performance. Those seeking graduate credit will be required to perform an analysis of stress as it affects themselves or their employees.

Tuition: \$144

MEMPHIS STATE UNIVERSITY,
Memphis, Tennessee, Department of Journalism

Introduction to Public Relations

#9011 (3 credits)

This course has been designed to provide students with a comprehensive understanding of the development, scope and role of the public relations field today. Emphasis will be placed on the role of public relations in society: practice models as well as public relations processes and applications.

Tuition: \$117

OHIO UNIVERSITY,
Athens, Ohio, Zoology Department

Bioethical Problems in Biology and Medicine

#9012 (5 quarter units)

Especially recommended for those employed in the health care professions, this course deals with the ethical issues raised by advances in research and technology in the fields of biology and medicine. The topics explored include health care models, patients' rights, abortion, aging, human experimentation, death and dying, genetic engineering, location of health care resources, behavioral modification and environmental issues.

Tuition: \$180

OHIO UNIVERSITY,
Athens, Ohio, Business Department

Small Business Administration

#9013 (4 quarter units)

This course covers all the initial considerations and planning needed to own and operate a small business. Students should have some previous knowledge of business or management.

Tuition: \$144

OKLAHOMA STATE UNIVERSITY,
Stillwater, Oklahoma, Applied Behavioral Studies in Education

Human Learning in Educational Psychology

#9014 (3 credits)

This course will focus on the study of teaching and learning theory. It will emphasize motivation, planning, evaluation, and classroom problems and management. Practical applications of instructional psychology theory will help teachers develop programs to address individual cultural and environmental differences among students.

Tuition: \$115

PENNSYLVANIA STATE UNIVERSITY,
University Park, Pennsylvania, College of Business Administration

Business Logistics

#9015 (3 credits)

This course covers the logistics functions in business and industry. This includes physical supply and distribution activities such as transportation, storage facilities and materials handling.

Tuition: \$162

PLATT COLLEGE,
Jefferson City, Missouri

Introduction to Paralegalism

#9016 (3 quarter units)

This course provides students with a working knowledge of concepts and theories of the law. The areas covered include: the roles and ethics of paralegals; job growth within this profession, and the construction of the Constitution, the Bill of Rights and due process of law. These basics will prepare students for advanced paralegal courses to be offered in the future.

Tuition: \$195

STATE UNIVERSITY OF NEW YORK AT BUFFALO,
Buffalo, New York, English Department

College Writing I

#9017 (3 credits)

This course teaches the skills needed for professional and collegiate writing. The analytical reading and thinking skills necessary for writing are emphasized. Learners will write frequently and will receive frequent evaluations of their writing from the course instructor.

Tuition: NY Residents \$147.60

Non-NY Residents \$336.60

UNIVERSITY OF ILLINOIS,
Urbana, Illinois, Business and Technical Writing Department

Report Writing

#9018 (3 credits)

This course addresses the principles of professional and technical writing, especially as applied to reports and other longer messages; practice in developing reports; research methods and techniques of outlining and organizing information. *Prerequisite:* College Composition or equivalent

Tuition: (until August 21, 1986) \$117

SPECIAL COURSE OFFERINGS

UNIVERSITY OF IOWA
Iowa City, Iowa, Finance Department,
College of Business Administration

Entrepreneurship and New Business Formation

#9019 (3 credits)

This course provides an introduction to the problems involved in starting a new business. Topics include buying a going business, starting a new business, acquiring franchises, selecting locations and facilities and financing the small business.

Tuition: \$136

**UNIVERSITY OF
SAN FRANCISCO,**
San Francisco, California, College of
Professional Studies

Project Management

#9020 (3 credits)

This course prepares professionals to effectively manage information systems projects. Project management is often tied to separate analysis, design or application projects. Participants will learn the concepts and techniques for the planning, design, evaluation, and reporting of information systems projects. State-of-the-art project management software will be analyzed and evaluated. This course will explore the generic principles and techniques of project management as it applies to a variety of fields.

Tuition: \$540

**SCHOOL FOR LIFELONG
LEARNING—UNIVERSITY
SYSTEM OF NEW HAMPSHIRE,**
Durham, New Hampshire

Dynamics of Management and Leadership

#9021 (3 credits)

This course examines the issues, problems and challenges associated with managing and leading people in today's work place. Learners will review, analyze and evaluate aspects of individual value systems and preferred styles of interaction and communication. The dynamics and issues associated with managing and leading predictable phases of the organizational life cycle will be examined. The merits and implications of corporate cultures and their influence on organizational life will be examined from each learner's perspective.

Tuition: \$180

**WASHINGTON STATE
UNIVERSITY,**
Pullman, Washington, Management
and Systems Department

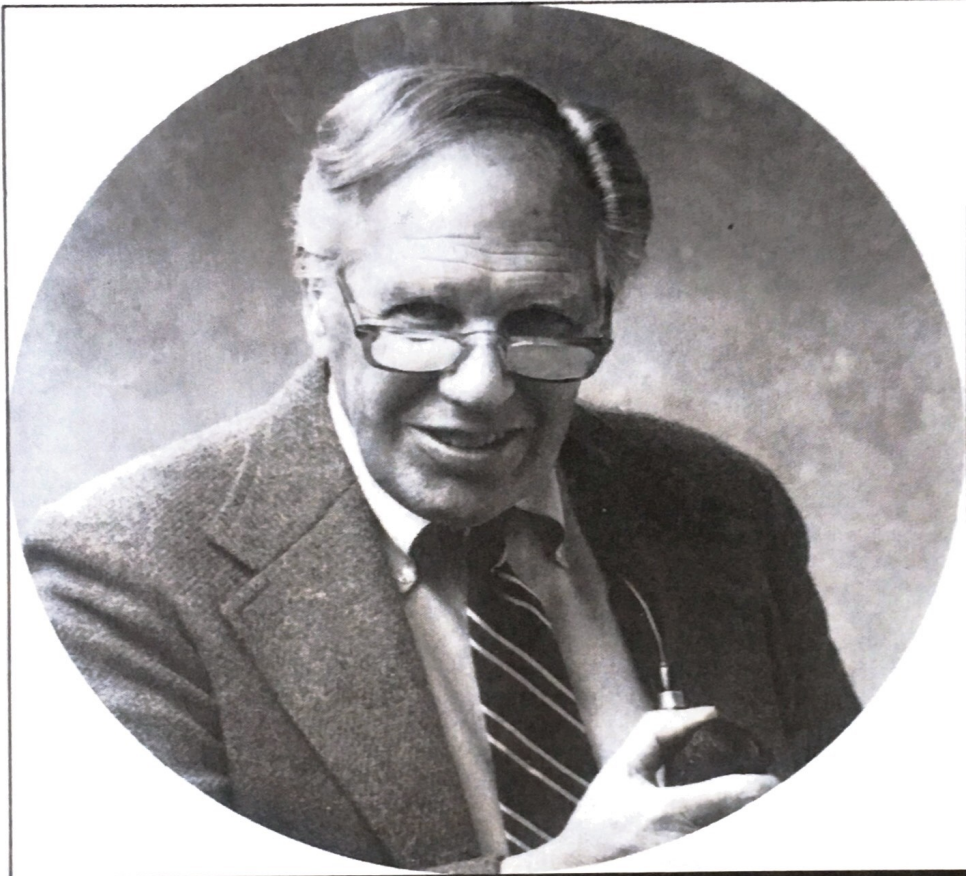
Organizational Behavior

#9022 (3 credits)

This course will cover the major individual and group level factors that influence behavior in organizations. At the individual level, the topics of learning, personality, perception, attitudes, motivation and stress are examined. At the group level, communication, decision making, coordination, power, politics, leadership, effectiveness and organization design are covered. The course objective is to give students an understanding how these individual and group level factors can be used to improve organizational performance and employee satisfaction.

Tuition: \$126

linking people to a world of education



“ As a teacher, I need to stay current in my field and fulfill certain continuing education requirements. I didn't feel like going back to campus during my vacations. Now I study year-long, without even driving across town. ”

linking people to a world of education

“Over the years in education, we have used, experimentally, radio, programmed learning, teaching machines and television. They helped learning, but each has had its major limitations: the student could not converse directly with the teacher, nor, for the most part, were the lessons paced to the individual's rate of learning. TeleLearning overcomes both these limitations. The student can raise questions with the teacher and the individual can progress at his own rate. Such an instrument can greatly improve the quality of education.”

ALVIN C. EURICH
*President and Chief Executive
Officer, Academy for
Educational Development*

NON-CREDIT COURSES

BUSINESS AND PROFESSIONAL SKILLS

Interactive Listening for Success

#4070

This course is designed to improve your overall people skills, enhance your interpersonal relationships, and increase your power as a professional. The course covers the following topics: the personal power of listening, barriers to listening, why you listen the way you do, making listening work for you, getting others to listen to you, handling difficult people, and building win/win relationships. Course activities include case studies, self-assessments, action plans, personal growth exercises, on-the-job applications, and skill-building assignments.

Course Price: \$180

Time Management

#4074

Is your "in" box always full? Are you always behind in your work, fighting a losing battle with the clock to get things done? The secret to personal success and satisfaction is the way you manage your time. The course covers a spectrum of techniques and topics, including time wasters, planning your work, getting organized, blocking interruptions, handling decisions, delegating, managing the time of subordinates, working with secretaries, and individualized time management systems. Your instructor will help you develop your own time management system to meet your needs and those of your organization.

Course Price: \$95

Handling Stress: A Skill for Managers and Employees

#4078

Stress costs the United States billions of dollars each year in lost productivity. Everyday pressures cause stress, which in turn affects the performance of the manager, the employee, and entire organization. This course discusses the internal and external sources of stress on managers and employees. You will be measure your own tendency toward stress and learn useful stress-reduction techniques.

Course Price: \$95

NOTE: This course may be taken for credit from Governor's State University in University Park, Illinois. Please call (312) 534-5000, ext. 2241 for information.

Business Math

#4079

Don't let your lack of math skills hold you back! This course will teach you the basic concepts and skills used most frequently in finance and consumer matters. You can determine mathematically which investment schemes are good, and learn to judge credit arrangements. This comprehensive course includes elements of statistics—an invaluable tool in business—with a special emphasis on organizing and presenting data.

Course Price: \$95

Principles of Accounting for Small Businesses

#4081

Did you know that a poor accounting system is one major cause of business failure? This course is designed especially for small business owners afraid to attempt any form of accounting. Your instructor takes you step-by-step through the basics. Welcome to the simplified world of accounting.

Course Price: \$95

Getting the Executive Job You Want

#4087

To succeed in the 1980s job market, you must know how to present yourself on paper and in person. This course uses a step-by-step approach to help you redefine your achievements and skills, evaluate your target, develop your materials, prepare for interviews, and negotiate terms to your best advantage. With an overall plan, you'll have the competence and confidence you need to secure your next job and to move up in it.

Course Price: \$95

Starting and Managing Your Own Business

#4124

Successful businesses are built on sound economic principles. In this course you will learn the basic principles necessary to get your own business up and running. You will discover strategies for planning, financing, and marketing your business. Managing cash flow—a critical issue for any new business—will be explained. Your instructor will guide your progress so that when you have completed this course you will know how to prepare your first year's budget and develop an effective business plan.

Course Price: \$95

Getting What You Want: How to Negotiate Anything

#4130

Whether you're negotiating a million dollar deal, peace with your neighbors, a grant to support you, or a discount on a vacation, a little expertise in the art of negotiation can go a long way. This course teaches you the simple rules of negotiation and shows you how to apply them.

Course Price: \$95

NON-CREDIT COURSES

Moonlight with Your Microcomputer

#4134

In this course you will learn dozens of viable approaches to making money with your microcomputer, including word processing and providing information services. The course reviews marketing strategies for developing a moneymaking business around your personal computer. It can be done—you just have to know how!

Course Price: \$95

Careers in Sales: Successful Selling Skills

#4153

Whether you are considering a career change into the sales profession or are already a professional and want to sharpen your skills and increase earnings, this course is essential. The course gives an overview of sales and the selling cycle and discusses the personality and business motives of buyers, how to prospect for accounts, opening statements, probing, developing a needs analysis, benefit selling, closing skills, and how to sell yourself to a prospective employer.

Course Price: \$95

Spreadsheet Software

#4211

One of the first practical uses of the microcomputer was the electronic spreadsheet. In this introductory course you will learn about the structure and operation of spreadsheet software. Lessons will cover a variety of application areas as well as design concepts. A must for those who are serious about using microcomputers in their business or profession.

Course Price: \$95

Accounting Software

#4212

This course is designed to present an overview of the capabilities of accounting programs for the microcomputer. You will gain a basic understanding of the structure, operations, and commands of accounting software. Among the topics covered are microcomputer management of general ledger, accounts payable, and accounts receivable.

Course Price: \$95

PERSONAL IMPROVEMENT

Computer Literacy

#4002

You've just bought your new personal computer. Will you be able to get started without help? Do you know what the components of your system can do? Do you need some basic information about computers so you can talk intelligently about them? In this introductory course your instructor will guide you through your initial computer experiences.

Course Price: \$95

Right Brain Drawing

#4009

Learn to draw using the new techniques involving the right side of the brain. This course is particularly helpful for people who believe they have little or no talent for drawing but are interested in trying. The techniques have also proved useful to teachers and others with some background in drawing.

Course Price: \$95

Know Your Body and Get the Most for Your Medical Dollar

#4032

Did you know your body has over 60,000 miles of arteries and veins? That each day your heart beats over 100,000 times? That electrical impulses can travel through your brain at speeds up to 270 miles per hour? In this course your instructor will take you on a fabulous journey exploring the secrets of the human body. Begin to see the body through the eyes of a physician, and gain the confidence to ask the kinds of questions that will save you medical dollars.

Course Price: \$95

Word Power: How to Make New Words Part of Your Vocabulary

#4035

The size of your vocabulary is a sure indicator of success. You can increase the number of words you know and use through this course's series of guided lessons. You will also learn how our language operates, how words are formed, and how they change. Concrete activities will help you use your new vocabulary with ease and confidence in everyday conversation.

Course Price: \$95

Memory Training Techniques

#4041

Imagine being able to use your memory as easily as you would use a file cabinet. That's how easy it can be if you know how—and you will never again forget another name, date, or other important piece of information. The key is organization. In this course you will learn specific organizational techniques to help you remember what you hear and read. You will find yourself using less time and energy to remember more as you become efficient at these proven methods.

Course Price: \$95

Author! Author! How to Get Your Writing Published

#4042

Do you long to see your name in print? There is a big thrill to finding your name credited for a magazine or newspaper article. But there's even a bigger thrill for an author—seeing your name printed on a check from your publisher. This course is going to help you become a professional writer. You will learn how to sell your writing regularly, how to study the marketplace, how to pre-sell a story, and how to prepare and submit your manuscript. Your instructor will evaluate your work and lead you to the goal of this course: to have at least one complete magazine article or story ready for submission to the market.

Course Price: \$95

NON-CREDIT COURSES

Understanding Economic News

#4045

Did you know that the answers to most economic questions are unbelievably simple? In fact, most of economics is the application of common sense. If you are able to think in economic terms, you will be able to do better in business, make wiser choices in the marketplace, and interpret the economic news reaching you every day through the radio, television, and newspapers. Your instructor will help you find the answers to the more complicated questions. The course goal is to make sure that economics will be a matter of common sense to you.

Course Price: \$95

Wines around the World: The Wines of France

#4056

The world of wine need not be mystifying or threatening. Anyone can learn to select a French wine like a master sommelier. This course will introduce you to a variety of red, white, rosé, still, and sparkling wines from among the glorious wines of France. Appropriate accompanying foods will be indicated, and you'll get a brief history of wine-making. Your instructor will show you how to select the perfect wines for your dinner, picnic, or party on the basis of the meal planned, the location of the event, the company, and your budget.

Course Price: \$95

The California Wine Connoisseur

#4058

Did you know that in 1858 Colonel Agoston Haraszthy predicted, "It is beyond a doubt that California will produce as noble a wine as any part of Europe"? That French wine experts have preferred Napa Valley Cabernet to their own Bordeaux in blind tasting for at least the last two years? That California is now producing 87% of the wine grapes grown in the U.S.? Master much more than astounding facts about one of California's most fascinating industries. Learn to appreciate wine types, regions, and wineries, and how to apply your knowledge of wines in practical ways. This course will appeal to the serious wine lover as well as to the not too serious connoisseur who enjoys a good glass of wine.

Course Price: \$95

Practical Writing Skills

#4101

When you are in school, you are faced with many writing tasks. You may have several papers due at the same time, and each paper may require a different approach. You need to be able to write easily and well. This course teaches some strategies for expanding ideas and for organizing materials. The course will include lessons on brainstorming, on cumulative sentences, and on using thesis sentences as a way to organize essays and research papers. Practicing these techniques will help you meet deadlines with confidence. You will gain a better understanding of the writing process, and your writing style will improve.

Course Price: \$95

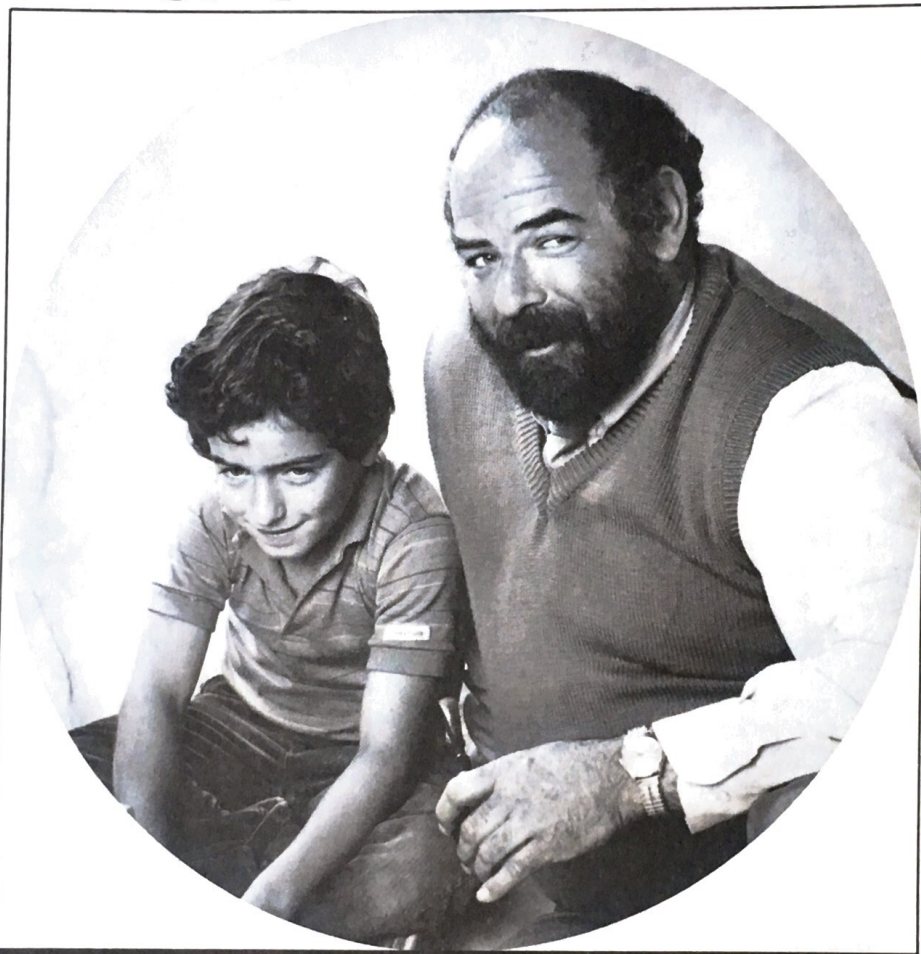
The Art of California Cuisine

#4162

California cuisine is a hybrid approach to the culinary arts, finding its roots somewhere between classical Haute Cuisine and contemporary Nouvelle Cuisine. Its most common elements include fresh, locally-produced ingredients, thoughtfulness of presentation, and use of distinctive native wines and ethnic tastes – all presented with informal elegance. The course explains why California cuisine has become a popular mode of dining and, more importantly, teaches you the skills to produce its finest dishes.

Course Price: \$95

linking people to a world of education



“ Going back to school when you’ve got a family is rough. With my Electronic University Network schedule, I can finish up my degree without taking time and money away from my boy. We “share” the computer: both of us do homework in the living room. ”

TRANSFERRING COURSE CREDITS

SECTION ELEVEN



Some students utilize the Electronic University Network to earn college credit with the ultimate goal in mind of transferring such earned credit to a local school or to a degree program in which they are already enrolled.

If this is your interest, you can be assured that the credit you earn, upon successful completion of a course and final exam, will be recorded at the institution that grants the credit. At the time of course completion, each accredited college or university will issue a letter of course completion or transcript of credits earned. Should you wish to apply these credits elsewhere, you can arrange to have additional transcripts forwarded to the colleges of your choice, or to your professional association or employer. Each institution will have its own fee for this transcript service.

It is recommended that students check with the institution of their choice, in advance, to become familiar with transfer policies and, if possible, to preapprove courses to be taken over the network.

Most universities and colleges across the country accept transfer credit from other accredited institutions. All credit granted through this delivery method will come directly from colleges and universities which are fully accredited by regional commissions on higher education, and recognized nationally by the Council on Post-Secondary Accreditation.

Transferring Standardized National Examination Scores

In addition, 2000 colleges and universities across the country will grant credits for the successful completion of CLEP and/or ACT PEP examinations—which are standardized National Examinations that cover primary undergraduate core subjects.

Some institutions delivering coursework on the network choose to utilize such well known standardized National Examinations as the final examination for select undergraduate courses.

Students who take standardized National Examinations, then, have two options for transferring the credit they have earned to another institution. They can either transfer the CLEP or ACT PEP test score to the institution of their choice, or they can opt for the usual method of transferring credit via an official transcript.

The CLEP exams (College Level Examination Program) are administered by the College Board, and the ACT PEP exams are given by the American College Testing Proficiency Examination Program. The procedure for taking these exams is similar to the procedure for all other course examinations.

See the student handbook for more information on final examinations.

linking people to a world of education



“ I teach at a junior college, so going to another campus to learn a bit more about food and wine was no treat. Without ever leaving my office – when I feel like going to class – I just sit down at my computer and think ‘cabernet sauvignon.’ ”

INSTITUTIONS PARTICIPATING IN STANDARDIZED NATIONAL EXAMINATION PROGRAMS

SECTION TWELVE



The institutions listed below grant credit for successful completion of the CLEP and/or ACT PEP examinations. This list also includes about 1,000 test centers located throughout the country, including institutions that serve as CLEP "limited test centers", which usually restrict testing to students admitted to or enrolled in the institution and which may have a more restricted schedule of testing. The number of participating institutions continues to grow, so if the institution of your choice is not listed, check directly with the appropriate departmental office or the registrar at that institution.

KEY:

- Participating institutions – CLEP
- * Test Centers – CLEP
- Participating institutions – ACT PEP
- ⌘ Test Centers – ACT PEP
- # Limited Test Centers – CLEP

ALABAMA

- # Alabama A&M University
- Alabama Christian College
- ⌘ Alabama State University
- ⌘ Alexander City State Jr. College
- Athens State College
- # Auburn University at Auburn
- ⌘ Auburn University at Montgomery
- ⌘ Birmingham – Southern College
- ⌘ Brewer State Junior College
- Community College of the Air Force
- ⌘ Enterprise State Junior College
- ⌘ Gadsden State Junior College
- ⌘ George C. Wallace State Community College – Dothan
- ⌘ George C. Wallace State Community College – Selma
- ⌘ Huntingdon College
- ⌘ Jacksonville State University
- ⌘ James H. Faulkner State Junior College
- # Jefferson State Junior College
- ⌘ John C. Calhoun State Community College
- ⌘ Judson College
- ⌘ Livingston University
- ⌘ Lurleen B. Wallace State Junior College
- Mobile College
- ⌘ Oakwood College
- S.D. Bishop State Junior College
- ⌘ Samford University
- ⌘ Spring Hill College
- ⌘ Stillman College
- ⌘ Talladega College
- ⌘ Troy State University – Dothan Fort Rucker
- ⌘ Troy State University – Troy
- ⌘ Tuskegee Institute
- ⌘ University of Alabama in Birmingham
- ⌘ University of Alabama in Huntsville
- ⌘ University of Alabama in Montgomery
- University of Alabama – The New College
- ⌘ University of Montevallo
- ⌘ University of North Alabama
- ⌘ University of South Alabama
- University of South Alabama School of Nursing
- ⌘ Wallace State Community College

ALASKA

- # Alaska Pacific University
- # Anchorage Community College
- ⌘ Islands Community College
- ⌘ Ketchikan Community College
- ⌘ Kenai Peninsula Community College
- ⌘ Kodiak Community College
- ⌘ Kuskokwim Community College
- ⌘ Matanuska – Susitna Community College
- ⌘ Northwest Community College
- ⌘ Prince William Sound Community College
- University of Alaska, Anchorage
- University of Alaska – Fairbanks
- ⌘ University of Alaska, Galena
- ⌘ University of Alaska, Juneau
- ⌘ University of Alaska – Unalaska

ARIZONA

- ⌘ Arizona College of the Bible
- # Arizona State University
- # Arizona Western College
- ⌘ Cochise College
- ⌘ Eastern Arizona College
- ⌘ Glendale Community College
- ⌘ Grand Canyon College
- ⌘ Maricopa Technical Community College
- ⌘ Mesa Community College
- ⌘ Mohave Community College
- ⌘ Navajo Community College
- # Northern Arizona University
- ⌘ Northland Pioneer College
- Ottawa University – Phoenix Center
- ⌘ Pima Community College – Downtown Campus
- ⌘ Scottsdale Community College
- ⌘ Southwestern Baptist Bible College
- Sedona College
- Southwestern University
- ⌘ University of Arizona
- University of Phoenix – Phoenix
- ⌘ University of Phoenix – Tucson
- ⌘ Yavapai College

ARKANSAS

- # Arkansas College
- # Arkansas State University – Beebe Branch
- # Arkansas State University – State University
- ⌘# Arkansas Technical University
- ⌘ Arkansas State University – Jonesboro
- Baptist System School of Nursing
- ⌘ College of the Ozarks
- ⌘ Crowleys Ridge College
- ⌘ East Arkansas Community College
- ⌘ Garland County Community College
- ⌘ Harding University
- ⌘ Henderson State University
- ⌘ Hendrix College
- Jefferson School of Nursing
- ⌘ John Brown University
- # Mississippi County Community College
- # North Arkansas Community College
- ⌘# Ouachita Baptist University
- Phillips County Community College
- ⌘ Rich Mountain Community College
- # Southern Arkansas University
- ⌘ Southern Baptist College
- ⌘ University of Arkansas at Fayetteville
- ⌘ University of Arkansas at Little Rock
- ⌘ University of Arkansas at Monticello
- ⌘ University of Arkansas at Pine Bluff
- University of Arkansas, Medical Science Campus
- ⌘ University of Central Arkansas
- # Westark Community College

CALIFORNIA

- # Allan Hancock College
- ⌘ Ambassador College
- ⌘ American River College
- # Armstrong College
- ⌘ Art Center College of Design
- ⌘ Art Center College of Design – Pasadena
- ⌘ Azusa Pacific University
- ⌘ Barstow Community College
- ⌘ Bethany Bible College
- ⌘ Biola University
- Butte College
- CA Dept of Consumer Affairs, Board of Accountancy
- California Baptist College
- ⌘ California Lutheran College
- ⌘ California Maritime Academy
- ⌘ California Polytechnic State University
- ⌘ California State College – Bakersfield
- ⌘ California State College – San Bernardino
- ⌘ California State College – Stanislaus
- ⌘ California State Polytechnic University – Pomona
- ⌘ California State University – Chico
- ⌘ California State University – Consortium
- ⌘ California State University – Dominguez Hills
- ⌘ California State University – Fresno
- ⌘ California State University – Fullerton
- ⌘ California State University – Hayward
- ⌘ California State University – Long Beach
- ⌘ California State University – Los Angeles
- ⌘ California State University – Northridge
- ⌘ California State University – Sacramento
- ⌘ Canada College
- ⌘ Cerro Coso Community College
- Chabot College
- ⌘ Chapman College, Barstow
- ⌘ Chapman College, Orange
- ⌘ Chapman College, Sacramento

- Christian Heritage College
- City College of San Francisco
- Claremont McKenna College
- Coastline Community College
- Cogswell College
- College of Marin, Registered Nursing Program
- College of Notre Dame—California
- Columbia Pacific University
- Consortium of California State Universities and Colleges
- Contra Costa College
- Cosumnes River College
- Crafton Hills College
- Cypress College
- DeAnza College
- Diablo Valley College
- Dominican College of San Rafael
- Foothill College
- Fresno City College
- Fresno Pacific College
- Glendale Community College
- Glendale Community College—Montrose Campus
- Golden Gate University—Sacramento
- Golden Gate University—San Francisco
- Golden West College
- Hartnell College
- Holy Names College
- Humboldt State University
- Humphreys College
- Imperial Valley College
- John F. Kennedy University
- Kensington University
- Lincoln University
- Loma Linda University
- Long Beach City College
- Los Angeles Metropolitan College
- Los Angeles City College
- Los Angeles Valley College
- Loyola Marymount University
- Magna Carta University
- Menlo College
- Merced College
- Mira Costa College
- Mount San Antonio College
- Mount St. Mary's College
- Monterey Institute of Foreign Studies
- Monterey Peninsula College
- National University—Inglewood
- National University—Sacramento
- National University—San Diego
- National University—Vista
- New College of California
- Northrop University
- Occidental College
- Ohlone College
- Orange Coast College
- Otis Art Institute of Los Angeles County
- Pacific Christian College
- Pacific Oaks College
- Pacific Union College
- Pacific Western University
- Palomar College
- Pasadena City College
- Point Loma College
- Point Loma College—Division of Nursing
- Pomona College
- Porterville College
- Rio Honda College
- Sacramento City College
- Saddleback Community College
- Saint John's College
- Saint Josephs College
- Saint Mary's College of California
- San Bernardino Valley College
- San Diego City College
- San Diego Mesa College
- San Diego Miramar College
- San Diego State University
- San Francisco Art Institute
- San Francisco State University
- San Joaquin Delta College
- San Jose State University
- Santa Ana College
- Santa Barbara City College
- Santa Monica College
- Simpson College
- Skyline College
- Sonoma State University
- Southland University
- University of Beverly Hills
- University of California—Berkeley
- University of California—San Francisco School of Nursing

- University of California, Extension Los Angeles
- University of California, Extension San Francisco
- University of La Verne
- University of the Pacific
- University of Phoenix—San Jose
- University of Phoenix—San Ramon
- University of Redlands
- University of San Diego College of Arts and Sciences
- University of San Diego—Philip Y. Hahn School of Nursing
- University of San Francisco
- University of Southern California
- University of Southern California, Department of Nursing
- U.S. International University
- Victor Valley College
- West Coast Bible College
- West Coast University
- West Hills Community College
- West Los Angeles College
- West Valley College
- Westminster University
- Whitehead College/University of Redlands
- Whittier College
- Woodbury University
- Yuba College

COLORADO

- Adams State College
- Arapahoe Community College
- Colorado Mountain College—Alpine Campus
- Colorado Mountain College—Aspen
- Colorado Mountain College—Breckenridge
- Colorado Mountain College—Carbondale
- Colorado Mountain College—Eagle
- Colorado Mountain College—East Campus
- Colorado Mountain College—Glenwood Springs
- Colorado Mountain College—Minturn
- Colorado Mountain College—Rifle
- Colorado Northwestern Community College
- Colorado School of Mines
- Colorado State University
- Colorado Technical College
- Columbia College
- Denver Auraria Community College
- Denver Baptist Bible College
- Fort Lewis College
- Front Range Community College
- Lamar Community College
- Loretto Heights College
- Mesa College
- Metropolitan State College
- Morgan Community College
- Naropa Institute
- Northeastern Junior College
- Otero Junior College
- Pike's Peak Community College
- Presbyterian St. Luke's School of Nursing
- Pueblo Community College
- Red Rocks Community College
- Regis College
- Regis College—Colorado Springs
- Rockmount College
- Trinidad State Junior College
- United States Air Force Academy
- University of Colorado at Boulder
- University of Colorado at Colorado Springs
- University of Colorado at Denver
- University of Denver
- University of Northern Colorado
- University of Phoenix—Colorado Division
- University of Southern Colorado
- Western State College

CONNECTICUT

- Albertus Magnus College
- Annhurst College
- Asnuntuck Community College
- Bridgeport Hospital School of Nursing
- Central Connecticut State University
- Charter Oak College
- Connecticut State Armory
- Eastern Connecticut State University
- Fairfield University
- Greater Hartford Community College
- Holy Apostles College
- Housatonic Community College
- Manchester Community College
- Mattatuck Community College
- Middlesex Community College
- Mitchell College
- Mohegan Community College
- Northwestern Connecticut Community College
- Norwalk Community College
- Post College
- Quinebaug Valley Community College
- Quinnipiac College
- Sacred Heart University
- Saint Mary's Hospital School of Nursing
- Saint Thomas Seminary of Hartford
- South Central Community College
- Southern Connecticut State University
- Thames Valley State Technical College
- Tunxis Community College
- University of Bridgeport
- University of Connecticut—Storrs
- University of Hartford
- University of New Haven
- Western Connecticut State University

DELAWARE

- Brandywine College
- Delaware Technical Community College—Georgetown
- Delaware Technical Community College—Terry Campus
- Wesley College
- Wilmington College

DISTRICT OF COLUMBIA

- American University
- Catholic University of America—College of Arts and Sciences
- District of Columbia Board of Accountancy
- Gallaudet College
- George Washington University
- Howard University
- Mt. Vernon College
- Southeastern University
- Strayer College
- Trinity College
- University of the District of Columbia

FLORIDA

- Barry University
- Bethune—Cookman College
- Brevard Community College
- Broward Community College
- Central Florida Bible College
- Central Florida Community College
- Chipola Junior College
- College of Boca Raton
- Daytona Beach Community College
- Eckerd College
- Edison Community College
- Embry—Riddle Aeronautical University
- Flagler College
- Florida Agricultural and Mechanical University
- Florida Atlantic University
- Florida College
- Florida Institute of Technology
- Florida International University

- Florida International University—School of Nursing
- Florida Junior College at Jacksonville
- Florida Keys Community College
- Florida Southern College
- Florida Memorial College
- Florida State University
- Fort Lauderdale College
- Gulf Coast Community College
- Hillsborough Community College—Tampa
- Hillsborough Community College—Ybor Campus
- Indian River Community College
- Jacksonville University
- Jones College
- Lake City Community College
- Lake Sumter Community College
- Manatee Junior College
- Miami Christian College
- Miami—Dade Community College, North Campus
- Miami—Dade Community College, South Campus
- Miami Education Consortium
- North Florida Junior College
- Nova University
- Okaloosa Walton Junior College
- Palm Beach—Atlantic College
- Palm Beach Junior College
- Pasco—Hernando Community College—West Campus
- Pensacola Junior College
- Polk Community College
- Rollins College
- St. John's River Junior College
- St. John Vianney College Seminary
- Saint Leo College
- St. Thomas University
- St. Petersburg Junior College
- Seminole Community College
- Southeastern College
- Stetson University
- Tallahassee Community College
- Troy State University—Florida Region, Inc.
- University of Central Florida
- University of Florida
- University of Miami
- University of North Florida
- University of Palm Beach—College of Business
- University of South Florida
- University of Tampa
- University of West Florida
- Valencia Community College

GEORGIA

- Abraham Baldwin Agricultural College
- Albany Junior College
- Albany State College
- Armstrong State College
- Atlanta Christian College
- Augusta College
- Bainbridge Junior College
- Berry College
- Brenau College
- Brewton—Parker College
- Brunswick Junior College
- Clayton Junior College
- Columbus College
- Dalton Junior College
- DeKalb Community College—Central
- DeKalb Community College—North Campus
- DeKalb Community College—South Campus
- Emanuel County Junior College
- Emory University
- Floyd Junior College
- Fort Valley State College
- Georgia College
- Georgia Institute of Technology
- Georgia Military College
- Georgia Southern College
- Georgia Southwestern College
- Georgia State University
- Gordon Junior College
- John Marshall University
- Kennesaw College
- LaGrange College
- Macon Junior College
- Medical College of Georgia
- Mercer University in Atlanta
- Mercer University
- Middle Georgia College
- Morehouse College

- % North Georgia College
- * Oglethorpe University
- Piedmont College
- # Reinhardt College
- * Savannah State College
- Shorter College
- South Georgia College
- Southern Technical Institute
- Spelman College
- Thomas County Community College
- Tift College
- Toccoa Falls College
- * Troy State University – Fort Benning
- # Truett – McConnell College
- * University of Georgia
- # Valdosta State College
- # Wesleyan College
- * West Georgia College
- Young Harris College

HAWAII

- Brigham Young University
- # Chaminade University of Honolulu
- Hawaii Loa College
- # Hawaii Pacific College
- # International College
- Kauai Community College
- Leeward Community College
- # University of Hawaii – Hilo
- * University of Hawaii – Manoa
- University of Hawaii – Maui Community College

IDAHO

- %* Boise State University
- College of Idaho
- # College of Southern Idaho
- * Idaho State University
- North Idaho College
- Northwest Nazarene College
- * Ricks College
- * University of Idaho

ILLINOIS

- AeroSpace Institute
- * Arlington Heights Memorial Library
- Aurora College
- * Barat College
- Belleville Area College
- Black Hawk College
- Black Hawk College – East Campus
- # Blackburn College
- Board of Governors Bachelor of Arts Degree Program
- * Bradley University
- * Carl Sandberg College
- Central YMCA Community College
- Chicago City – Wide College
- Chicago Conservatory College
- Chicago National College of Naprapathy
- Chicago State University
- Chicago Technical College
- %# City Colleges of Chicago
- * College of DuPage
- * College of Lake County
- College of St. Francis
- Columbia College
- Concordia College
- Daniel Hale Williams University
- # Danville Area Community College
- DeLourdes College
- DePaul University
- Eastern Illinois University
- # Elgin Community College
- Elmhurst College
- Eureka College
- # Felician College
- * George Williams College
- %# Governors State University
- # Greenville College
- # Highland Community College
- %# Illinois Benedictine College
- %# Illinois Central College
- Illinois College
- IECC – Frontier Community College
- IECC – Lincoln Trail College
- %# IECC – Olney Central College
- Illinois Institute of Technology
- * Illinois State University
- * Illinois Valley Community College

- Illinois Wesleyan University – School of Nursing
- John A. Logan College
- John Wood Community College
- Joliet Junior College
- Judson College Illinois
- Kankakee Community College
- %# Kaskaskia College
- Kendall College
- Kennedy – King College
- Kishwaukee College
- Lake Forest College
- # Lake Land College
- Lakeview Medical Center School of Nursing
- Lewis and Clark Community College
- Lewis University
- # Lincoln College
- %# Loop College
- Loyola University of Chicago
- MacCormac Junior College
- * MacMurray College
- Malcolm X College
- # Mallinckrodt College
- * McHenry County College
- %# McKendree College
- Mennonite College of Nursing
- Midwest College of Engineering
- # Monmouth College
- * Moraine Valley Community College
- Morrison Institute of Technology
- Morton College
- # Mundelein College
- National College of Education – Chicago
- National College of Education – Evanston
- National College of Education – Lombard
- * North Central College
- %# Northeastern Illinois University
- %# Northern Illinois University
- # North Park College
- Northwestern University – Division of Continuing Education
- Northwestern University – School of Nursing
- # Oakton Community College
- Olive – Harvey College
- %# Olive Nazarene College
- Olney Central College
- Oregon Bible College
- %# Parkland College
- Parks College of St. Louis University
- * Prairie State College
- Principia College
- # Quincy College
- Rend Lake College
- * Richard J. Daley College
- * Richland Community College
- # River Bend Library System
- Robert Morris College
- %# Rockford College
- # Rock Valley College
- Roosevelt University
- Rosary College
- Rush University
- Saint Francis Hospital School of Nursing
- Saint Xavier College
- # Sangamon State University
- %# Sauk Valley College
- School of the Art Institute of Chicago
- %# Shawnee College
- # Southeastern Illinois College
- %# Southern Illinois University at Carbondale
- %# Southern Illinois University at Edwardsville
- Spertus College of Judaica
- # Springfield College in Illinois
- State Community College
- Thornton Community College
- Trinity Christian College
- Trinity College
- Triton College
- Truman College
- University of Chicago – Graduate School of Business
- * University of Illinois – Chicago Circle
- * University of Illinois – Champaign
- University of Illinois College of Nursing
- University of Illinois, Medical Center College of Nursing – Chicago

- University of Illinois, Medical Center College of Nursing – Urbana
- Wabash Valley College – IECC
- Waubesa Community College
- %# Western Illinois University
- Wheaton College
- Wilbur Wright College
- * William Rainey Harper College
- Wright College

INDIANA

- Ancilla College
- Anderson College
- * Ball State University
- Bethel College
- Butler University
- # Calumet College
- DePauw University
- Earlham College
- Fort Wayne Bible College
- # Franklin College
- * Goshen College
- # Grace College
- Holy Cross Junior College
- Huntington College
- %# Indiana Central University
- Indiana Institute of Technology
- Indiana Northern Graduate School of Professional Management
- Indiana University – Purdue University – Fort Wayne
- * Indiana – Purdue University at Indianapolis
- * Indiana State University – Evansville
- * Indiana State University – Terre Haute
- * Indiana University – Bloomington
- Indiana University at Kokomo
- # Indiana University at South Bend
- # Indiana University East
- * Indiana University Northwest
- Indiana University School of Nursing
- # Indiana University Southeast
- Lutheran School of Nursing
- Manchester College
- * Marian College
- * Marion College
- Purdue University – Calumet
- Purdue University – North Central
- # Purdue University – West Lafayette
- Rose – Hulman Institute of Technology
- % Saint Francis College of Fort Wayne
- St. Joseph's College
- Saint Mary of the Woods College
- Saint Mary's College
- St. Meinrad College
- # Taylor University
- Tri – State University
- University of Evansville
- Valparaiso University
- # Vincennes University
- # Vincennes University – Fort Harrison
- Wabash College

IOWA

- %# Briar Cliff College
- Buena Vista College
- Central College of Iowa
- Clarke College
- Clinton Community College
- Coe College
- # Cornell College
- Des Moines Area Community College
- Des Moines Area Community College – Boone Campus
- Divine Word College
- %# Drake University
- # Ellsworth Community College
- %# Graceland College
- Grand View College
- Indian Hills Community College
- * Iowa Central Community College
- %# Iowa Lakes Community College
- # Iowa State University
- * Iowa Wesleyan College
- Iowa Western Community College – Clarinda
- Iowa Western Community College – Council Bluffs
- * Kirkwood Community College
- Loras College

- Luther College
- * Marshalltown Community College
- Marycrest College
- # Morningside College
- Mount Mercy College
- # Mount St. Clare College
- # Muscatine Community College
- # North Iowa Area Community College
- Northeast Iowa Technical Institute – Calmar
- Northeast Iowa Technical Institute – Peosta
- # Northwestern College
- # Open Bible College
- # Scott Community College
- Scott Community College – Palmer Campus
- * Simpson College
- Sioux Empire College
- Southeastern Community College
- # Southeastern Community College – West Burlington
- # Southwestern Community College
- Spencer School of Business
- # St. Ambrose College
- %# University of Dubuque
- * University of Iowa
- University of Iowa College of Nursing
- %# University of Northern Iowa
- * Upper Iowa University
- Vennard College
- # Wartburg College
- # Waldorf College
- # Western Iowa Tech Community College
- # Westmar College
- # William Penn College

KANSAS

- Baker University
- # Benedictine College
- Bethany College
- Bethel College
- Butler County Community College
- Cloud County Community College
- Coffeyville Community College
- # Colby Community College
- Cowley County Community College
- Dodge City Community College
- * Donnelly College
- Emporia State University
- Ft. Hays State University
- Fort Scott Community College
- # Friends Bible College
- # Friends University
- # Garden City Community Junior College
- Hesston College
- Highland Community Junior College
- Hutchinson Community College
- %# Johnson County Community College
- Kansas City Kansas Community College
- Kansas Newman College
- %# Kansas State University
- %# Kansas Wesleyan University
- # Labette Community College
- Marymount College of Kansas
- %# McPherson College
- %# Mid-America Nazarene College
- Ottawa University
- Pittsburg State University
- Saint John's College
- Saint Mary College
- * Saint Mary of the Plains College
- Southwestern College
- Tabor College
- University of Kansas
- # Washburn University
- %# Wichita State University

KENTUCKY

- Asbury College
- Ashland Community College
- Bellarmine College
- * Brescia College
- # Campbellsville College
- Centre College of Kentucky
- # Cumberland College
- Eastern Kentucky University
- # Elizabethtown Community College
- # Georgetown College
- Hazard Community College
- # Henderson Community College
- % Hopkinsville Community College

- # Jefferson Community College
- # Kentucky State University
- Kentucky Wesleyan College
- Lees Junior College
- Lexington Technical Institute
- Louisville School of Art
- Madisonville Community College
- Maysville Community College
- Morehead State University
- # Murray State University
- Northern Kentucky University
- Paducah Community College
- Pikeville College
- Prestonburg Community College
- St. Catherine College
- Somerset Community College
- Southeast Community College
- # Transylvania University
- * Union College
- University of Kentucky
- Center/Fort Knox
- University of Kentucky College of Nursing
- University of Kentucky Community College System
- %# University of Kentucky – Lexington
- %# University of Louisville
- Western Kentucky University

LOUISIANA

- * Baton Rouge Vocational – Technical Institute
- * Centenary College of Louisiana
- Delgado Community College
- Dillard University
- Grambling State University
- # Louisiana College
- Louisiana State University – Baton Rouge
- Louisiana State University – Eunice
- * Louisiana Tech University
- # Loyola University
- * McNeese State University
- Nicholls State University
- # Northeast Louisiana University
- * Northwestern State University
- Our Lady of Holy Cross College
- Saint Joseph Seminary
- %# Southeastern Louisiana University
- Southern University in New Orleans
- Tulane University
- * University of Southwestern Louisiana

MAINE

- % Bangor Community College
- Bangor Theological Seminary
- Bowdoin College
- Husson College
- Kennebec Valley Vocational Technical Institute
- Nasson College
- Saint Joseph's College
- Southern Maine Vocational – Technical Institute
- Thomas College
- Unity College
- * University of Maine at Augusta
- University of Maine at Farmington
- University of Maine at Fort Kent
- * University of Maine at Machias
- * University of Maine at Orono
- * University of Maine at Presque Isle
- # University of New England
- # Spalding University
- Sue Bennet College
- Sullivan Junior College
- %# Thomas More College
- * University of Southern Maine
- Westbrook College

MARYLAND

- %# Allegany Community College
- * Anne Arundel Community College
- Bowie State College
- Broadfording Christian College
- Capitol Institute of Technology
- % Catonsville Community College
- Cecil Community College
- # Charles County Community College
- * Chesapeake College

- %# College of Notre Dame of Maryland
- # Columbia Union College
- * Community College of Baltimore
- Coppin State College
- Dundalk Community College
- * Essex Community College
- * Frederick Community College
- Frostburg State College
- Garrett Community College
- Goucher College
- # Hagerstown Junior College
- Harford Community College
- # Hood College
- Howard Community College
- Johns Hopkins University, Evening College
- * Loyola College
- Maryland Institute College of Art
- Montgomery College – Germantown Campus
- * Montgomery College – Rockville Campus
- Montgomery Community College
- Morgan State University
- * Mount Saint Mary's College
- %# Prince Georges Community College
- St. Mary's Seminary & University
- # St. Mary's College of Maryland
- # Salisbury State College
- # Towson State University
- United States Naval Academy
- # University of Baltimore
- University of Maryland – Baltimore County
- %# University of Maryland – College Park
- University of Maryland – Eastern Shore
- University of Maryland – School of Nursing
- University of Maryland – University College
- Washington College
- Western Maryland College

MASSACHUSETTS

- American International College
- Anna Maria College
- Aquinas Junior College
- # Assumption College
- # Atlantic Union College
- Babson College
- Bay Path Junior College
- Becker Junior College – Leicester Campus
- # Becker Junior College – Worcester
- Bentley College
- Berkshire Christian College
- Berkshire Community College
- Boston College
- % Boston College School of Nursing
- * Boston University
- * Bridgewater State College
- Bristol Community College
- Bunker Hill Community College
- Burdett School
- # Cape Cod Community College
- %# Central New England College
- Central New England College – Westboro
- Chamberlayne Junior College
- %# Curry College
- Dean Junior College
- Eastern Nazarene College
- Emerson College
- Emmanuel College
- Endicott College
- Fisher Junior College
- * Fitchburg State College
- * Framingham State College
- Gordon College
- Greenfield Community College
- Hellenic College
- # Holyoke Community College
- Lawrence Memorial Hospital School of Nursing
- Lesley College
- Massachusetts Bay Community College
- Massachusetts College of Art
- Massasoit Community College
- Middlesex Community College
- Mount Wachusett Community College
- Newbury Junior College
- Nichols College
- * North Adams State College

- North Shore Community College – Beverly
- # North Shore Community College – Lynn
- Northeast Institute of Industrial Technology
- %# Northeastern University
- # Northern Essex Community College
- Pine Manor College
- Quincy Junior College
- Quinsigamond Community College
- Regis College
- Saint Hyacinth College and Seminary
- Salem State College
- # Southeastern Massachusetts University
- # Springfield College
- * Springfield Technical Community College
- Stockbridge School of Agriculture at the University of Massachusetts
- % Stonehill College, Evening College
- Suffolk University
- * University of Lowell
- * University of Massachusetts – Amherst
- University of Massachusetts – Boston Campus
- Wentworth Institute of Technology
- Western New England College
- # Westfield State College
- Wheelock College
- Worcester Polytechnic Institute
- # Worcester State College

MICHIGAN

- Adrian College
- Albion College
- Alma College
- # Alpena Community College
- # Andrews University
- Aquinas College
- Bronson Methodist Hospital School of Nursing
- Calvin College
- # Central Michigan University
- Cleary CollMg0
- Concordia College
- # Delta College
- # Eastern Michigan University
- Ferris State College
- Glen Oaks Community College
- Gogebic Community College
- Grace Bible College
- Grand Rapids Baptist College
- Grand Rapids Junior College
- # Grand Valley State Colleges
- Hillsdale College
- # Hope College
- Hurley Medical Center School of Nursing
- Jackson Community College
- Jordan College
- Kalamazoo Valley Community College
- Kellogg Community College
- Kirtland Community College
- * Lake Michigan College
- # Lake Superior State College
- Lansing Community College
- Lawrence Institute of Technology
- Macomb Community College – Center Campus
- # Macomb Community College – South Campus
- * Madonna College
- # Marygrove College
- # Mercy College of Detroit
- Michigan Christian College
- # Michigan State University
- # Michigan Technological University
- Mid-Michigan Community College
- Monroe County Community College
- # Muskegon Community College
- Nazareth College
- Northeastern School of Commerce
- # Northern Michigan University
- Northwest Michigan University
- Northwood Institute
- Oakland Community College – Bloomfield Hills
- Oakland University
- Saginaw Valley State College

- # St. Clair County Community College
- * St. Mary's College
- Schoolcraft College
- * Siena Heights College
- # Southwestern Michigan College
- Suomi College
- * Spring Arbor College
- * University of Detroit
- %# University of Michigan – Ann Arbor
- # University of Michigan – Dearborn
- % University of Michigan – Flint
- University of Michigan School of Nursing – Flint
- Washtenaw Community College
- Wayne County Community College
- # Wayne State University
- # West Shore Community College
- %# Western Michigan University
- William Tyndale College

MINNESOTA

- Anoka – Ramsey Community College
- Augsburg College
- Austin Community College
- Bemidji State University
- Bethel College
- # Brainerd Community College
- # College of St. Benedict
- College of St. Catherine
- # College of St. Scholastica
- College of Saint Teresa
- College of St. Thomas
- # Concordia College – Moorhead
- Concordia College – St. Paul
- # Crosier Seminary Junior College
- Gustavus Adolphus College
- Hamline University
- Hibbing Community College
- Inver Hills Community College
- Lakewood Community College
- Macalaster College
- # Mankato State University
- # Metropolitan State University
- Minnesota Bible College
- Minneapolis College of Art and Design
- # Minneapolis Community College
- # Moorhead State University
- # New College, College of St. Thomas
- Normandale Community College
- North Central Bible College
- Northland Community College
- # Rainy River Community College
- # Rochester Community College
- # St. Cloud State University
- St. John's University
- Saint Mary's College
- Saint Olaf College
- Saint Paul Bible College
- # Southwest State University
- % University of Minnesota – Duluth
- %# University of Minnesota – Minneapolis/St. Paul
- * University of Minnesota – Morris
- # Willmar Community College
- # Winona State University
- # Worthington Community College

MISSISSIPPI

- Belhaven College
- # Delta State University
- East Central Junior College
- Hinds Junior College
- * Holmes Junior College
- Itawamba Junior College
- * Jackson State University
- Jones County Junior College
- # Meridian Junior College
- Millsaps College
- # Mississippi College
- Mississippi Gulf Coast Junior College
- Mississippi Industrial College
- %# Mississippi State University
- # Mississippi University for Women
- Pearl River Junior College
- % University of Mississippi – Jackson Branch
- # University of Mississippi – University
- University of Mississippi Medical Center School of Nursing
- # University of Southern Mississippi
- Wesley College
- # William Carey College

MISSOURI

- Avila College
- Calvary Bible College
- Cardinal Glennon College
- Central Methodist College
- Central Missouri State University
- Columbia College
- Conception Seminary College
- Crowder College
- Culver—Stockton College
- Drury College
- East Central Junior College
- Evangel College
- Fontbonne College
- Hannibal—LaGrange College
- Harris Stowe College
- Jefferson College
- Kansas City Art Institute
- Kemper Military School & College
- Lincoln University
- Lindenwood College
- Longview Community College
- Maple Woods Community College
- Maryville College
- Mineral Area College
- Missouri Baptist College
- Missouri Southern State College
- Missouri Valley College
- Missouri Western State College
- Moberly Area Junior College
- Northeast Missouri State University
- Northwest Missouri State University
- Park College
- Penn Valley Community College
- Rockhurst College
- St. Louis Christian College
- St. Louis College of Pharmacy
- St. Louis Community College at Florissant Valley
- St. Louis Community College at Forest Park
- St. Louis Community College at Meramec
- St. Louis Public Library
- St. Louis University
- St. Louis University School of Nursing
- St. Mary's College—O'Fallon
- St. Paul's College
- The School of the Ozarks
- Southeast Missouri State University
- Southwest Baptist University
- Southwest Missouri State University
- State Fair Community College
- Stephens College
- Tarkio College
- Three Rivers Community College
- Trenton Junior College
- University of Missouri—Columbia
- University of Missouri—Delta Center
- University of Missouri Extension—Chillicothe
- University of Missouri Extension—St. Joseph
- University of Missouri—Kansas City
- University of Missouri Lake of Ozarks Extension Service
- University of Missouri—Rolla
- University of Missouri—St. Louis
- Washington University
- Webster College—St. Louis
- Webster University—Kansas City
- Westminster College
- William Jewell College
- William Woods College

MONTANA

- Carroll College
- College of Great Falls
- Dawson Community College
- Eastern Montana College
- Flathead Valley Community College
- Miles Community College
- Montana College of Mineral Science and Technology
- Montana State University
- Northern Montana College
- Rocky Mountain College
- University of Montana
- Western Montana College

NEBRASKA

- Bellevue College
- Central Community College—Platte Campus
- Chadron State College
- College of Saint Mary
- Concordia Teachers College
- Creighton University
- Dana College
- Doane College
- Doane Lincoln College
- Grace College of the Bible
- Hastings College
- Kearney State College
- McCook Community College
- Methodist School of Nursing
- Metropolitan Technical Community College
- Midland Lutheran College
- Mid—Plains Community College
- Nebraska College of Business
- Nebraska Wesleyan University
- Nebraska Western College
- Northeast Technical Community College
- Peru State College
- Union College
- University of Nebraska—Lincoln
- University of Nebraska at Omaha
- University of Nebraska Medical Center
- Wayne State College
- York College

NEVADA

- Clark County Community College
- Northern Nevada Community College
- Reno Business College
- Truckee Meadows Community College
- University of Nevada—Las Vegas
- University of Nevada—Reno
- Western Nevada Community College

NEW HAMPSHIRE

- Colby—Sawyer College
- Daniel Webster College
- Franklin Pierce College
- Keene State College
- Nathaniel Hawthorne College
- New England College
- New Hampshire College
- New Hampshire Vocational—Technical College, Manchester
- New Hampshire Vocational—Technical College, Nashua
- New Hampshire Votch College
- Notre Dame College—New Hampshire
- Plymouth State College
- Rivier College
- Saint Anselm College
- School for Lifelong Learning, University System of New Hampshire—Berlin
- University of New Hampshire
- University System of New Hampshire School for Lifelong Learning
- White Pines College

NEW JERSEY

- Atlantic Community College
- Bergen Community College
- Bloomfield College
- Brookdale Community College
- Burlington County College
- Caldwell College
- Camden County College
- Centenary College
- College of St. Elizabeth
- County College of Morris
- Cumberland County College
- Don Bosco College
- Drew University
- Edward Williams College
- Elizabeth General Medical Center School of Nursing
- Englewood Hospital School of Nursing
- Essex Community College
- Fairleigh Dickinson University—Madison

- Fairleigh Dickinson University—Rutherford College of Business Administration, Education, Arts and Sciences
- Fairleigh Dickinson University—Teaneck
- Felician College
- Georgian Court College
- Glassboro State College
- Gloucester County College
- Jersey City State College
- Kean College of New Jersey
- Mercer County Community College
- Middlesex County College
- Monmouth College
- Montclair State College
- New Jersey Institute of Technology
- Northeastern Bible College
- Ocean County College
- Our Lady of Lourdes School of Nursing
- Passaic County Community College
- Ramapo College of New Jersey
- Rider College
- Rutgers—The State University of New Jersey—Camden College of Arts and Sciences
- Rutgers—The State University of New Jersey—College of Nursing
- Rutgers—The State University of New Jersey—College of Pharmacy
- Rutgers—The State University of New Jersey—Livingston, College
- Rutgers—The State University of New Jersey—Newark College of Arts and Sciences
- Rutgers—The State University of New Jersey—Rutgers College
- Rutgers—The State University of New Jersey—University College
- St. Peter's College—Englewood Cliffs
- St. Peter's College—Jersey City
- Salem Community College
- Seton Hall University
- Somerset County College
- Stevens Institute of Technology
- Stockton State College
- Thomas A. Edison College
- Trenton State College
- Union County College—Cranford
- Union County College—Elizabeth
- Union College—Plainfield
- Upsala College
- Westminster Choir College
- William Paterson College of New Jersey

NEW MEXICO

- College of Santa Fe
- College of the Southwest
- Eastern New Mexico University—Clovis
- Eastern New Mexico University—Portales
- Eastern New Mexico University—Roswell
- Navajo Community College
- New Mexico Highlands University
- New Mexico Junior College
- New Mexico Military Institute
- New Mexico State University at Alamogordo
- New Mexico State University at Carlsbad
- New Mexico State University—Las Cruces
- New Mexico State University—San Juan College
- University of Albuquerque
- University of New Mexico
- Western New Mexico University

NEW YORK

- Academy of Aeronautics
- Adelphi University
- Adirondack Community College
- Albany Business College
- Albany College of Pharmacy
- Albany Medical Center School of Nursing
- Alfred State College
- Alfred University
- American Academy McAllister Institute

- Bard College
- Berkeley Claremont School—Hicksville
- Berkeley Claremont School—New York City
- Bernard M. Baruch College
- Board of Cooperative Education Services
- Boricua College
- Borough of Manhattan Community College
- Bramson Ort. Technical Institute
- Briarcliff Secretarial School
- Bronx Community College
- Brooklyn College
- Broome Community College
- Bryant and Stratton Business Institute—Buffalo
- Bryant and Stratton Business Institute—Rochester
- Canisius College
- Cayuga County Community College
- Cazenovia College
- Central City Business Institute
- City College of New York
- City University of New York
- Clarkson College of Technology
- Clinton Community College
- Colgate University
- College of Insurance
- College of Mt. St. Vincent
- College of New Rochelle
- College of St. Rose
- College of Staten Island
- College of White Plains of Pace University
- Columbia College—Syracuse
- Columbia Greene Community College
- Columbia Memorial Hospital School of Nursing
- Community College of the Finger Lakes
- Concordia College of New York
- Cooper Union
- Cornell University College of Arts and Sciences
- Cornell University College of Engineering
- Corning Community College
- Culinary Institute of America
- CUNY University Application Process
- Daemen College
- Dominican College of Blauvelt
- Dowling College
- Dutchess Community College
- D'Youville College
- Edna McConnell Clark School of Nursing
- Eisenhower College
- Elizabeth Seton College
- Elmira College
- Empire State College
- Erie Community College
- Fashion Institute of Technology
- Fiorello La Guardia Community College
- Five Towns College
- Fordham University
- Friends World College
- Fulton—Montgomery Community College
- Genesee Community College
- Hartwick College
- Helen Fuld School of Nursing
- Herbert Lehman College
- Herkimer County Community College
- Hilbert College
- Hobart College
- Hofstra University
- Houghton College—Buffalo
- Houghton College—Houghton
- Hudson Valley Community College
- Hunter College
- Interboro Institute
- Iona College
- Ithaca College
- Jamestown Business College
- Jamestown Community College
- Jamestown Community College—Cattaraugus
- Jefferson Community College
- John Jay College of Criminal Justice—CUNY
- Julliard School
- Katharine Gibbs School—Melville
- Katharine Gibbs School—New York City

- Keuka College
- Kings College
- Kingsborough Community College
- Lab Institute of Merchandising
- Laguardia Community College
- LeMoine College
- Long Island University—Brooklyn Center
- Long Island University—C.W. Post Center
- Long Island University—Southampton College
- Malcolm—King Harlem College Extension
- Manhattan College
- Manhattan College—Riverdale
- Manhattan School of Music
- Manhattanville College
- Maria College
- Maria Regina College
- Marist College
- Marymount College
- Marymount Manhattan College
- Mater Dei College
- Medaille College
- Medgar Evers College
- Mercy College at Yonkers
- Mercy College New York
- Mohawk Valley Community College
- Molloy College
- Monroe Community College
- Mt. St. Alphonsus Seminary
- Mt. St. Mary College
- Nassau Community College
- Nazareth College
- New School for Social Research
- New York City Technical College
- New York Institute of Technology
- New York School of Interior Design
- New York State College of Agriculture and Life Sciences
- New York State College of Ceramics
- New York State College of Human Ecology
- New York State College of Industrial & Labor Relations
- New York State Education Department—Division of Teacher Education
- New York University
- New York University School of Business & Public Administration
- New York University School of Continuing Education
- Niagara County Community College
- Niagara University
- North County Community College
- Nyack College
- Olean Business Institute
- Onondaga Community College (Syracuse)
- Orange County Community College
- Pace University—New York
- Pace University—Pleasantville/Briarcliff
- Paul Smith's College of Arts and Sciences
- Port Authority of New York and New Jersey
- Powelson Business Institute
- Pratt Institute
- Queens College
- Queensborough Community College
- Rensselaer Polytechnic Institute
- Roberts Wesleyan College
- Rochester Area Colleges
- Rochester Business Institute
- Rochester Institute of Technology
- Rockland Community College
- Russell Sage College
- Saint Bonaventure University
- Saint Francis College
- St. John Fisher College
- St. John's University
- Saint Joseph's College New York
- St. Lawrence University
- St. Thomas Aquinas College
- Schenectady County Community College
- School of Visual Arts
- Schwartz College of Pharmacy
- Siena College
- Skidmore College
- Staten Island Community College
- SUNY—Agricultural and Technical College at Alfred

- SUNY—Agricultural and Technical College at Canton
- SUNY—Agricultural and Technical College at Cobleskill
- SUNY—Agricultural and Technical College at Delhi
- SUNY—Agricultural and Technical College at Farmingdale
- SUNY—Agricultural and Technical College at Morrisville
- SUNY at Albany
- SUNY at Binghamton
- SUNY at Buffalo
- SUNY at Stony Brook
- SUNY College at Brockport
- SUNY College at Buffalo
- SUNY College at Cortland
- SUNY College at Fredonia
- SUNY College at Geneseo
- SUNY College at New Paltz
- SUNY College at Old Westbury
- SUNY College at Oneonta
- SUNY College at Oswego
- SUNY College at Plattsburgh
- SUNY College at Potsdam
- SUNY College at Purchase
- SUNY College of Agriculture at Cornell University
- SUNY College of Arts and Sciences at Geneseo
- SUNY College of Arts and Sciences—Plattsburgh
- SUNY—College of Environmental Science
- SUNY College of Technology at Utica—Rome
- SUNY—Empire State College
- SUNY—Maritime College at Fort Schuyler
- SUNY—Regents College Degrees
- SUNY—Downstate Medical Center
- SUNY—University Center
- SUNY—Upstate Medical Center
- Suffolk Branch Campus of C.W. Post/L.I.U.
- Suffolk County Community College
- Sullivan County Community College
- Syracuse University
- Taylor Business Institute
- Tompkins Cortland Community College
- Touro College (New York City)
- Trocaire College
- Ulster County Community College
- United States Military Academy
- University of Rochester, School of Nursing
- University of State of New York
- Utica College of Syracuse University
- Utica School of Commerce
- Wagner College
- Wells College
- Westchester Business Institute
- Westchester Community College
- William Smith College
- Wood School, Inc.
- Yeshiva University
- York College—City University of New York

*In New York State the ACT PEP tests are called New York Regents College Examinations and are administered by the Regents External Degree Program of the University of the State of New York, Albany, New York.

NORTH CAROLINA

- Anson Technical College
- Appalachian State University
- Atlantic Christian College
- Barber—Scotia College
- Belmont Abbey College
- Bennett College
- Brevard College
- Caldwell Community College
- Campbell University
- Cape Fear Technical Institute
- Catawba College
- Central Carolina Technical College
- Chowan College
- College of the Albemarle
- Craven Community College
- Davidson County Community College

- East Carolina University
- East Coast Bible College
- Elizabeth City State University
- Elon College
- Fayetteville State University
- Forsyth County Public Library
- Gardner—Webb College
- Guilford College
- Guilford Technical Community College
- High Point College
- John Wesley College
- Johnston Technical College
- Lenoir—Rhyne College
- Lenoir Community College
- Louisburg College
- Mars Hill College
- Meredith College
- Methodist College
- Mitchell Community College
- Montreat—Anderson College
- Mount Olive College
- Nash Technical College
- North Carolina A & T University
- North Carolina Central University
- North Carolina State University
- North Carolina Wesleyan College
- Peace College
- Pembroke State University
- Pfeiffer College
- Pitt Community College
- Queens College
- Rockingham Community College
- Sacred Heart College
- St. Andrew's Presbyterian College
- Salem College—North Carolina
- Sandhills Community College
- Shaw University
- Southeastern Community College
- University of North Carolina—Asheville
- University of North Carolina—Chapel Hill
- University of North Carolina at Charlotte
- University of North Carolina at Greensboro
- University of North Carolina at Wilmington
- Vance—Granville Community College
- Wake Forest University
- Wake Technical Institute
- Warren Wilson College
- Wayne Community College
- Western Carolina University
- Wingate College
- Winston—Salem State University

NORTH DAKOTA

- Bismarck Junior College
- Dickinson State College
- Jamestown College
- Mary College
- Mayville State College
- Minot State College
- North Dakota State School of Science
- North Dakota State University
- Northwest Bible College
- University of North Dakota—Grand Forks
- University of North Dakota—Williston Branch
- Valley City State College

OHIO

- Air Force Institute of Technology
- Antioch College
- Ashland College
- Baldwin—Wallace College
- Bluffton College
- Borromeo College of Ohio
- Bowling Green State University—Bowling Green
- Bowling Green State University—Huron
- Capital University
- Cedarville College
- Central State University
- Circleville Bible College
- Clark Technical College
- Cleveland Institute of Art
- Cleveland State University
- College of Mount St. Joseph
- Columbus Technical Institute
- Deaconess Hospital School of Nursing
- Defiance College
- Denison University

- Dyke College
- Edgely College
- Edison State Community College
- Findlay College
- Fairview General Hospital School of Nursing
- Franklin University
- Heidelberg College
- Hiram College
- Hocking Technical College
- John Carroll University
- Kent State University
- Kent State University—Salem Regional Campus
- Kettering College of Medical Arts
- Lake Erie College
- Lorain County Community College
- Lourdes College
- Malone College
- Marietta College
- Marion Technical College
- Miami—Jacobs Junior College of Business
- Miami University
- Mount Union College
- Mt. Vernon Nazarene College
- Muskingum Area Technical College
- Muskingum College
- Notre Dame College of Ohio
- Ohio Dominican College
- Ohio Northern University
- Ohio State University
- Ohio University—Athens
- Ohio University—Lancaster Branch
- Otterbein College
- Pontifical College Josephinum
- Rio Grande College
- St. Vincent Charity Hospital & Health Center
- Shawnee State Community College
- Sinclair Community College
- University of Akron
- University of Cincinnati
- University of Dayton
- University of Steubenville
- University of Toledo
- Urbana University
- Ursuline College
- Walsh College
- Wilberforce University
- Wilmington College—Ohio
- Wittenberg University
- Wright State University
- Youngstown State University

OKLAHOMA

- Bacone College
- Bartlesville Wesleyan College
- Bethany Nazarene College
- Cameron University
- Carl Albert Junior College
- Central State University
- East Central Oklahoma State University
- Eastern Oklahoma State College
- El Reno Junior College
- Langston University
- Murray State College
- Northeastern Oklahoma A & M College
- Northeastern Oklahoma College
- Northeastern Oklahoma State University
- Northern Oklahoma College
- Northwestern Oklahoma State University
- Oklahoma Baptist University
- Oklahoma Christian College
- Oklahoma City Community College
- Oklahoma City University
- Oklahoma Panhandle State University
- Oklahoma State University
- Oklahoma State University Technical Institute
- Oral Roberts University
- Phillips University
- Rogers State College
- Rose State College
- St. Gregory's College
- Sayre Junior College
- Seminole Junior College
- Southeastern Oklahoma State University
- Southwestern Oklahoma State University
- Tulsa Junior College
- University of Oklahoma

- * University of Science and Arts of Oklahoma
- * University of Tulsa
- * Western Oklahoma State College

OREGON

- # Clackamas Community College
- * Clatsop Community College
- # Columbia Christian College
- # Concordia College
- # Eastern Oregon State College
- # Evergreen State College
- # George Fox College
- # Lane Community College
- # Lewis and Clark College
- # Linfield College
- # Linn - Benton Community College
- * Linfield - Good Samaritan School of Nursing
- # Marylhurst Education Center
- # Mt. Hood Community College
- * Oregon Institute of Technology
- # Oregon State University
- # Pacific University
- # Portland Community College
- #* Portland State University
- # Reed College
- # Rogue Community College
- # Southern Oregon State College
- # Southwestern Oregon Community College
- # Treasure Valley Community College
- # Umpqua Community College
- #* University of Oregon
- * University of Portland
- # Warner Pacific College
- # Western Oregon State College
- # Western State Chiropractic College
- # Willamette University College of Liberal Arts & Music

PENNSYLVANIA

- # Albright College
- # Allegheny College
- # Allentown College of St. Frances de Sales
- * Allentown Hospital School of Nursing
- # Alliance College
- # Alvernia College
- # Beaver College
- # Bloomsburg University of Pennsylvania
- # Bucknell University
- # Bucks County Community College
- # Butler County Community College
- # Cabrini College
- *# California University of Pennsylvania
- # Carlisle College
- # Cedar Crest College
- # Chatham College
- # Cheyney University of Pennsylvania
- # Clarion University of Pennsylvania
- # College Misericordia
- * Community College of Allegheny County
- * Commercial College of Philadelphia
- * Compact for Lifelong Educational Opportunities
- # Curtis Institute of Music
- * Delaware County Community College
- # Delaware Valley College of Science and Agriculture
- # Dickinson College
- # Drexel University - Evening College
- *# Duquesne University
- # East Stroudsburg University of Pennsylvania
- # Eastern College
- *# Edinboro University of Pennsylvania
- # Elizabethtown College
- # Elizabethtown College Center for Community Education
- # Franklin & Marshall College
- * Gannon University
- * Geneva College
- # Grove City College
- *# Gwynedd Mercy College
- * Hahnemann College of Allied Health Professions
- *# Harrisburg Area Community College
- # Holy Family College
- # Immaculata College

- *# Indiana University of Pennsylvania
- # International Correspondence Schools Center for Degree Studies
- # Keystone Junior College
- *# King's College
- *# Kutztown University of Pennsylvania
- # Lackawanna Junior College
- # Lafayette College
- # Lancaster Bible College
- *# LaRoche College
- *# LaSalle University
- # Lebanon Valley College
- *# Lehigh County Community College
- # Lock Haven University of Pennsylvania
- # Luzerne County Community College
- # Lycoming College
- # Lyon School of Business
- # Manor Junior College
- * Mansfield University of Pennsylvania
- * Marywood College
- * Memorial Hospital School of Nursing - Roxborough
- # Mercyhurst College
- # Messiah College
- * Millersville University of Pennsylvania
- *# Montgomery County Community College
- * Moravian College
- # Mt. Aloysius Junior College
- * Muhlberg College
- # Neumann College
- # Northeastern Christian Junior College
- # Northampton County Area Community College
- * Pennsylvania State University - Capitol Campus
- # Pennsylvania State University - Fayette Campus
- # Pennsylvania State University - University Park
- # Philadelphia College of Art
- # Philadelphia College of Pharmacy and Science
- # Philadelphia College of Textiles and Science
- * Philadelphia College of the Bible
- # Point Park College
- *# Reading Area Community College
- *# Robert Morris College
- * Robert Morris College - Coraopolis
- # Rosemont College
- * Saint Francis College
- * St. Joseph Hospital School of Nursing
- *# St. Joseph's University
- # St. Vincent College
- # Seton Hill College
- # Shippensburg University of Pennsylvania
- *# Slippery Rock University of Pennsylvania
- * Spring Garden College
- * Susquehanna University
- * Temple University
- # Thiel College
- * Thomas Jefferson University
- # United Wesleyan College
- # University of Pittsburgh at Bradford
- # University of Pittsburgh - Greensburg Campus
- *# University of Pittsburgh - Main Campus
- * University of Scranton
- # Ursinus College
- # Valley Forge Christian College
- * Valley Forge Military Junior College
- # Villa Maria College
- # Villanova University
- # Washington and Jefferson College
- # Waynesburg College
- # West Chester University of Pennsylvania
- # Westminster College
- * Widener University
- # Wilkes College
- * Wilson College
- * York College of Pennsylvania

PUERTO RICO

- # Bayamon Central University
- # Catholic University of Puerto Rico
- # Inter American University

- University of Puerto Rico, Aquadilla
- University of Puerto Rico, Arecibo
- University of Puerto Rico, Bayamon
- University of Puerto Rico, Cayey
- University of Puerto Rico, Humacao
- University of Puerto Rico, Mayaguez
- University of Puerto Rico, Ponce
- University of Puerto Rico, Rio Piedras

RHODE ISLAND

- Barrington College
- Bryant College
- * Community College of Rhode Island - Flanagan Campus
- # Community College of Rhode Island - Warwick
- *# Johnson and Wales College
- # Providence College
- * Rhode Island College
- # Roger Williams College
- # Save Regina College
- # University of Rhode Island - Kingston
- * URI - Division of University Extension - Providence

SOUTH CAROLINA

- # Allen University
- * Anderson College of South Carolina
- # Baptist College at Charleston
- # Benedict College
- # Bob Jones University
- # Central Wesleyan College
- # Chesterfield - Marlboro Technical College
- # The Citadel
- # Clemson University
- * Coker College
- * College of Charleston
- * Columbia Bible College
- # Columbia College
- # Converse College
- # Erskine College
- # Florence Darlington Technical College
- * Francis Marion College
- # Lander College
- # Limestone College
- *# Medical University of South Carolina
- * MUSC Satellite Nursing Program - Winthrop College Campus
- # Newberry College
- # Orangeburg - Calhoun Technical College
- # Presbyterian College
- * Piedmont Technical College
- * South Carolina State College
- # Spartanburg Methodist College
- # Sumter Area Technical College
- # Trident Technical College
- * University of South Carolina - Columbia
- # University of South Carolina - Conway
- *# University of South Carolina - Spartanburg
- # University of South Carolina - Sumter
- # Williamsburg Technical College
- * Winthrop College
- # Wofford College

SOUTH DAKOTA

- # Augustana College
- * Black Hills State College
- * COM/ED, the Community Education Center
- # Community College of the North
- # Central University Center
- * Dakota State College
- *# Dakota Wesleyan University
- *# Huron College
- *# Mount Marty College
- # National College
- * Northern State College
- # Presentation College
- # Sioux Falls College
- # South Dakota School of Mines & Technology
- *# South Dakota State University
- # University of South Dakota - Vermillion
- # Yankton College

TENNESSEE

- *# Austin Peay State University
- * Bethel College
- * Bristol College
- # Bryan College
- *# Carson - Newman College
- # Christian Brothers College
- # Columbia State Community College
- * Cooper Institute, Inc
- # Cumberland College of Tennessee
- * David Lipscomb College
- *# East Tennessee State University
- *# Ft. Sanders Presbyterian Hospital School of Nursing
- # Freed - Hardeman College
- # Hiwassee College
- # Jackson State Community College
- # King College
- * Lambuth College
- # Lee College
- * LeMoine - Owen College
- # Lincoln Memorial University
- # Martin College
- # Maryville College
- # Memphis Academy of Arts
- # Memphis State University
- *# Middle Tennessee State University
- # Milligan College
- # Motlow State Community College
- # Rhodes College
- # Roane State Community College
- # Scarritt College
- # Shelby State Community College
- # State Technical Institute at Memphis
- * Southern College of Seventh - Day Adventists
- # Steed College
- * Tennessee State University
- * Tennessee Technological University
- * Tennessee Wesleyan College
- * Tomlinson College
- # Trevecca Nazarene College
- # Tusculum College
- *# Union University
- *# University of Tennessee at Chattanooga
- *# University of Tennessee - Knoxville
- # University of Tennessee - Martin
- # Vanderbilt University
- *# Volunteer State Community College
- # Walters State Community College

TEXAS

- # Abilene Christian University
- # Alvin Community College
- # Amarillo College
- # Ambassador College
- * Amber University
- * American Technological University
- # Angelina College
- * Angelo State University
- # Austin College
- *# Austin Community College
- * Baptist Memorial Hospital System School of Nursing
- * Baylor University
- # Bee County College
- # Bishop College
- # Blinn College
- * Brazosport College
- * Brookhaven College
- * Calvary College
- * Cedar Valley College
- *# Central Texas College
- * Central Texas College - Overseas Europe (APO New York)
- * Cisco Junior College
- # Clarendon College
- * College of the Mainland
- # Concordia Lutheran College
- * Cooke County College
- * Dallas Baptist College
- # Del Mar College
- # East Texas Baptist University
- * East Texas State University
- # East Texas State University at Texarkana
- # Eastfield College
- # El Centro Community College
- # Frank Phillips College
- # Grayson County College
- # Gulf Coast Bible College
- # Hardin - Simmons University
- * Henderson County Junior College
- # Hill Junior College
- # Houston Baptist University
- # Houston Community College
- *# Howard College at Big Spring

- Howard Payne University
- Houston - Tillotson College
- Incarnate Word College
- Jacksonville College
- Jarvis Christian College
- Kilgore College
- Lamar University
- Laredo Junior College
- Letourneau College
- Lubbock Christian College
- McLennan Community College
- McMurry College
- Midland College
- Midwestern State University
- Mountain View College
- Navarro College
- North Harris County College
- North Lake College
- North Texas State University
- Northwood Institute
- Odessa College
- Our Lady of the Lake University at San Antonio
- Pan American University
- Paul Quinn College
- Prairie View A & M University
- Rice University
- Richland College
- St. Edward's University
- St. Mary's University
- St. Phillip's College
- Sam Houston State University
- San Antonio College
- San Jacinto College
- South Plains College
- Southern Methodist University
- Southwest Texas State University
- Southwestern Adventist College
- Southwestern Assemblies of God College
- Southwestern University
- Stephen F. Austin State University
- Sul Ross State University
- Tarleton State University
- Tarrant County Junior College - Northeast Campus
- Tarrant County Junior College - Northwest Campus
- Tarrant County Junior College - South Campus
- Temple Junior
- Texas A & I University
- Texas A & M University - College Station
- Texas A & M University at Galveston
- Texas College
- Texas Christian University
- Texas Lutheran College
- Texas Southmost College
- Texas State Technical Institute
- Texas Tech University
- Texas Wesleyan College
- Trinity University
- Tyler Junior College
- University of Dallas
- University of Houston - University Park
- University of Houston at Clear Lake City
- University of Houston/Downtown College
- University of Mary Hardin - Baylor
- University of Texas at Arlington
- University of Texas at Austin
- University of Texas at Dallas
- University of Texas at El Paso
- University of Texas at San Antonio
- University of Texas Health Science Center
 - University of Texas School of Nursing
- Vernon Regional Junior College
- Victoria College
- Wayland Baptist College
- Weatherford College
- West Texas State University
- Western Texas College
- Wharton County Junior College
 - Wiley College

UTAH

- Brigham Young University
- College of Eastern Utah
- Dixie College
- Snow College
- Southern Utah State College
- University of Phoenix, Utah Division
- University of Utah
- Utah State University

- Utah Technical College at Salt Lake
- Weber State College
- Westminster College

VERMONT

- Burlington College
- Castleton State College
- Champlain College
- College of St. Joseph the Provider
- Community College of Vermont
- Goddard College
- Green Mountain College
- Johnson State College
- Lyndon State College
- Mark Hopkins College
- Marlboro College
- Norwich University - Vermont College
- Saint Michael's College
- Southern Vermont College
- Trinity College
- University of Vermont
 - Vermont College

VIRGINIA

- Averett College
- Blue Ridge Community College
- Bluefield College
- Central Virginia Community College
- Christopher Newport College
- Dabney S. Lancaster Community College
- Eastern Mennonite College
- Eastern Shore Community College
- Emory Henry College
- George Mason University
- Germanna Community College
- Hampton University
- James Madison University
- J. Sargeant Reynolds Community College - Grace St. Campus
- Liberty Baptist College
- Longwood College
- Lynchburg College
- Mary Baldwin College
- Mary Washington College
- Marymount College of Virginia
 - Mountain Empire Community College
- Norfolk State University
- Northern Virginia Community College
- Old Dominion University
- Paul D. Camp Community College
- Radford University
- Randolph - Macon Woman's College
- Richard Bland College
- Roanoke College
- St. Paul's College
- Shenandoah College & Conservatory of Music
- Southside Virginia Community College - Alberta
- Southside Virginia Community College - Keyville
- Southwest Virginia Community College - Richlands
- Sweet Briar College
- Thomas Nelson Community College
- Tidewater Community College - Portsmouth
- Tidewater Community College - Virginia Beach
- University of Richmond - Richmond College
- University of Richmond - Westhampton College
 - Upper Iowa University Extension Division
- Virginia Commonwealth University
- Virginia Highlands Community College
- Virginia Intermont College
- Virginia Polytechnic Institute and State University
- Virginia State University
- Virginia Wesleyan College
- Virginia Western Community College

WASHINGTON

- Bellevue Community College
- Big Bend Community College
- City College
- City University

- Clark College
- Cogswell College North
- Everett Community College
- Evergreen State College
- Ft. Steilacoom Community College
- Gonzaga University
- Grays Harbor College
- Heritage College
- Highline Community College
- Joint Center for Graduate Study
- Lower Columbia College
- North Seattle Community College
- Northwest College
- Olympic College
- Pacific Lutheran University
- Saint Martin's College
- Seattle Central Community College
- Seattle Pacific University
- Seattle University
- Shoreline Community College
- Skagit Valley College
- South Seattle Community College
- Spokane Community College
- Spokane Falls Community College
 - State Board of Accountancy
- Tacoma Community College
- University of Washington
- Walla Walla College
- Walla Walla Community College
- Washington State University
- Wenatchee Valley College
- Western Washington University
- Whatcom Community College
- Whitworth College

WEST VIRGINIA

- Alderson - Broaddus College
- Appalachian Bible College
 - Bethany College
- Bluefield State College
- Concord College
- David & Elkins College
- Fairmont State College
- Glenville State College
- Marshall University
- Ohio Valley College
- Parkersburg Community College
- Potomac State College
- Salem College
- Shepard College
- Southern West Virginia Community College - Logan Campus
- Southern West Virginia Community College - Williamson
- University of Charleston
- West Liberty State College
- West Virginia Institute of Technology
- West Virginia Northern Community College
- West Virginia State College
- West Virginia University
- West Virginia Wesleyan College
- Wheeling College

WISCONSIN

- Alverno College
- Beloit College
- Blackhawk Technical Institute - Janesville
- Cardinal Stritch College
- Carroll College
- Concordia College
- District One Technical Institute
- Edgewood College
- Fox Valley Technical Institute
- Gateway Technical Institute - Kenosha
- Holy Redeemer College
- Lakeland College
- Madison Area Technical College
- Marian College of Fond du Lac
- Marquette University
- Marquette University College of Nursing
- Medical College of Wisconsin
- Milton College
- Milwaukee Area Technical College
- Milwaukee School of Engineering
- Moraine Park Technical Institute
- Mount Mary College
- Mount Senario College
 - Northeast Wisconsin Technical Institute
- Nicolet College and Technical Institute
- North Central Technical Institute - Wausau

- Northland College
- Ripon College
 - St. Joseph's School Nursing
- Saint Norbert College
- Silver Lake College
- University of Wisconsin Center - Baraboo/Sauk County
- University of Wisconsin Center - Barron County
- University of Wisconsin Center - Fond du Lac
- University of Wisconsin Center - Manitowoc County
- University of Wisconsin Center - Marathon
- University of Wisconsin Center - Marinette
- University of Wisconsin Center - Marshfield/Wood County
- University of Wisconsin Center - Richland
- University of Wisconsin Center - Rock County
- University of Wisconsin Center - Sheboygan County
- University of Wisconsin Center - Waukesha
- University of Wisconsin - Eau Claire
- University of Wisconsin - Fox Valley
- University of Wisconsin - Green Bay
- University of Wisconsin - La Crosse
- University of Wisconsin - Madison
- University of Wisconsin - Milwaukee
- University of Wisconsin - Oshkosh
- University of Wisconsin - Parkside
- University of Wisconsin - Platteville
- University of Wisconsin - River Falls
- University of Wisconsin - Stevens Point
- University of Wisconsin - Stout
- University of Wisconsin - Superior
- University of Wisconsin - Washington County Campus
- University of Wisconsin - Whitewater
- Viterbo College
 - Waukesha County Technical Institute
- Wisconsin Indianhead Technical Institute

WYOMING

- Casper College
- Central Wyoming College
- Eastern Wyoming College
- Laramie County Community College
- Northwest Community College
- Sheridan College
- University of Wyoming
- Western Wyoming College

OVERSEAS

- American College in Paris, France
- American College of Thailand
- Bermuda College, Bermuda
- Canadian School of Management, Canada
- Centre for Business Studies, England
- Champlain Regional College, Canada
- College of the Virgins Island, Virgin Islands
- Haitian - American Institute, Haiti
- Kingsway College, Canada
- Marianapolis College, Canada
- National College of Education & Technology, Lagos, Nigeria
- Panama Canal College, Canal Zone
- Universidad de las Americas, A.C. Mexico
- Schiller International University, Heidelberg, West Germany
- Universitat Di Aruba, Antilles
- University of Guam, Guam
- York University, Canada

STUDENT ENROLLMENT FORM

- Yes, I want to enroll as a member of the Electronic University Network. I understand my one-time enrollment fee of \$195 is good for life and also entitles my immediate family members to all Electronic University Network programs and services.
- In addition to enrolling, please also register me for the following courses.

Course # _____ Title _____
Course # _____ Title _____
Course # _____ Title _____
Course # _____ Title _____

Name _____ SS# _____

Shipping Address _____

City _____ State _____ Zip _____

Home Phone _____ - _____ (Please include phone numbers so that counselors can verify

Work Phone _____ - _____ shipping/billing information)

Computer format (*circle one*) IBM, Apple, Commodore (name and model) _____

Modem (name and model) _____

Credit Information:

VISA Card # _____

MC Exp. Date _____

AmEx Name on Card _____

Diner's Signature _____

- Please have a counselor call to help me select my courses.

STUDENT ENROLLMENT FORM

- Yes, I want to enroll as a member of the Electronic University Network. I understand my one-time enrollment fee of \$195 is good for life and also entitles my immediate family members to all Electronic University Network programs and services.
- In addition to enrolling, please also register me for the following courses.

Course # _____ Title _____
Course # _____ Title _____
Course # _____ Title _____
Course # _____ Title _____

Name _____ SS# _____

Shipping Address _____

City _____ State _____ Zip _____

Home Phone _____ - _____ (Please include phone numbers so that counselors can verify

Work Phone _____ - _____ shipping/billing information)

Computer format (*circle one*) IBM, Apple, Commodore (name and model) _____

Modem (name and model) _____

Credit Information:

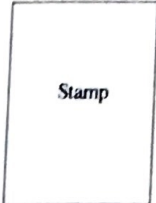
VISA Card # _____

MC Exp. Date _____

AmEx Name on Card _____

Diner's Signature _____

- Please have a counselor call to help me select my courses.



Office of Admissions
The Electronic University Network
505 Beach Street
San Francisco, CA 94133



Office of Admissions
The Electronic University Network
505 Beach Street
San Francisco, CA 94133

THE ELECTRONIC UNIVERSITY NETWORK

505 Beach Street

San Francisco, California 94133

415/928-2800